

PIVOTABLE FERTILIZER KIT MOUNTING INSTRUCTIONS

G2/G4 Fertilizer Disc

Before working on your planter or drill

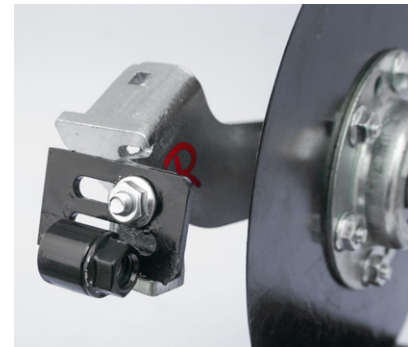
DANGER: When storing or working on the planter always install cylinder stops or place the planter on stands to prevent personal injury or damage to the attachments.

PLEASE: Read instructions completely and verify all package contents before beginning installation.

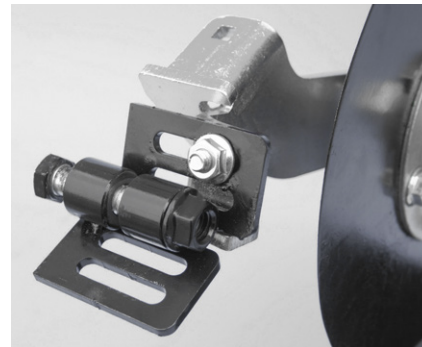
NOTE: *There are left-hand and right-hand units. Shown are right-hand units.*

#1: Screw injector orifice into the end of the adjustable threaded tube guide that will be pointing down. The orifice end with the small hole is screwed in towards the inside of the tube, with the color coated end towards the outside. Tighten orifice with 5/32" Allen wrench.

#2: Using one of the carriage bolts and whiz nuts provided, bolt the adjustable bracket with center swivel piece and welded nut to the rear section of the fertilizer bracket on your G2 or G4. The welded-on nut should be on the same side of the bracket as the disc.



#3: The adjustable bracket with swivel piece towards the outside should be attached next, held in place with the bolt provided. Make sure the head of the bolt is on the opposite side of the bracket as the disc. Do not tighten bolt until after final adjustments have been made.

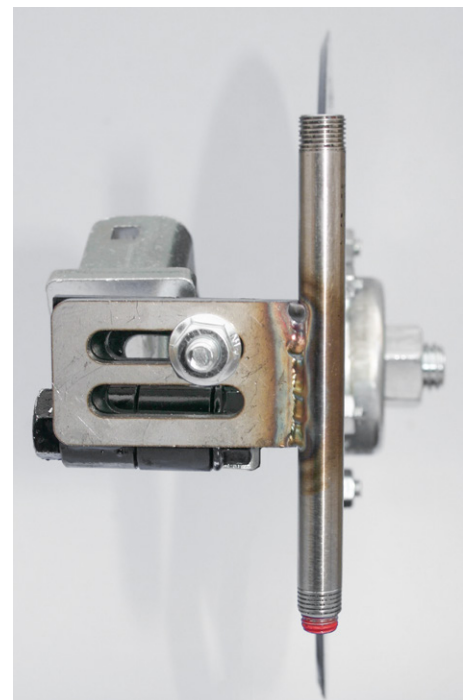
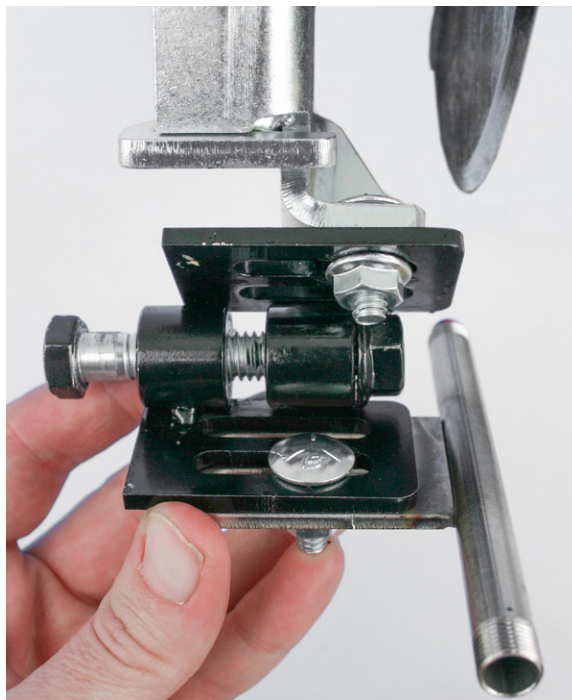


#4: Use the other carriage bolt and whiz nut to attach the adjustable threaded tube guide to the back (outside) of the adjustable bracket with outer swivel piece. Make sure the end with the injector orifice is pointed down.

#5: Adjust the brackets in and out so that the threaded tube guide lines up directly behind the G2 or G4 fertilizer disc. Angle the back adjustable bracket so that the fertilizer shoots in the desired distance from the G2/G4 disc.

#6: Slide the thicker end of the rubber boot up over the bottom end of the threaded tube guide. Secure in place with hose clamp.

#7: Tighten all bolts and nuts



Before you begin, verify all "package contents" items
NOTE: *There are left-hand and right-hand G2/G4 units.*

G2/G4 FAB Bracket Package Contents (per single row)	
Item	Quantity
1/4" x 3/4" Carriage Bolt	2
1/4" Whiz Nut	2
Fertilizer Adjustable Bracket	
Center pivot with welded nut	1
Outer pivot	1
3/8" x 1-3/4" SS Bolt	1
Instruction Sheet	1
Injector Orifice Package Contents (per single row—use if needed)	
Item	Quantity
Injector Orifice (High Pressure Nozzle)* 1	1
*Orifice sizes vary according to planned gallons per acre (gpa) and speed (mph). Specify when ordering.	
Orifice & Fertilizer Chart	1