

G2™ G3™ G4™ MOUNTING INSTRUCTIONS

Part 1 of 2: Installing the Arm Bracket to the Tail Section

Monosem Planters

Before working on your planter or drill

DANGER: When storing or working on the planter always install cylinder stops or place the planter on stands to prevent personal injury or damage to the attachments.

PLEASE: Read instructions completely and verify all package contents before beginning installation.

!! NOTE: There are **left-hand** and **right-hand** G2, G3, and G4 units. Lefts and rights are determined facing planter from the back.

!! NOTE: WHEN YOU PICK THE PLANTER UP, THE GAUGE WHEEL WILL HIT THE PRESS WHEEL. When you set the planter back down, the gauge wheel will go forward and the tail section will go backward so that they will not hit while running in the field. **WHEN INSTALLING THE G2/G3/G4 EITHER TIE THE GAUGE WHEEL FORWARD OR THE TAIL SECTION UP.**

Installing the Fertilizer Bracket & Disc to the Arm Bracket

1. Remove both press wheels from tail section of planter.
2. Bolt one mounting bracket (1R or 1L) to the tail section with metric bolts (LH or RH) and two of the 5/8" jam nuts, **placing a blue Monosem spacer between the tail section and mounting bracket.**
3. Slide stainless spindle bolt through the arm bracket's center hole. Position the different arms as follows:
 - G2:** With the single prong of the arm bracket pointing to the front and the double prongs pointing out the back,
 - G3:** With the cut-out end of the arm pointing to the front,
 - G4:** With the thicker end for fastening the disc mounting plate pointing to the back,
 slide the spindle bolt through the previously bolted mounting bracket, and proceed to slide the remaining mounting bracket on to the other side of spindle bolt. Using the other metric bolts, jam nuts, and blue spacer bolt the newly added mounting bracket to the tail section. Thread two 5/8" nuts on the outsides of the spindle bolt.
4. Now, thread the 3/8" x 3/4" bolt and lock washer through the top, center of mounting brackets to fasten together, locking down with 3/8" lock nut.
5. Before tightening button head bolts and 3/8" bolt, be sure the brackets are straight across from one another. After aligning the brackets, tighten the button head bolts with a 3/8" Allen wrench type socket. Tighten the 3/8" bolt on the top of the bracket and the two 5/8" nuts on the spindle bolt so fertilizer bracket flexes freely.

Part 1 of 2 Parts List Monosem

Fertilizer Disc Package Contents (per single row)

Item	Quantity
Arm.....	1
Mounting Brackets (1 Left & 1 Right) ..	2
3/8" x 3/4" Bolt	1
3/8" Lockwasher	1
3/8" Lock Nut	1

(continued on part 2)

Monosem Wheel Bolt Package Contents (per single row)

Item	Quantity
Spindle Bolt	1
M16 x 2.0 x 40 LH Bolt	2
M16 x 2.0 x 40 RH Bolt	2
Blue 3/8" (Monosem) Spacers	2
5/8" Nut	2 +2

(continued on part 2)

Corresponds with PART#:

G2ML, G2MR, G2MLPT, G2MRPT, G3ML, G3MR, G4ML, G4MR, G4MLPT, G4MRPT

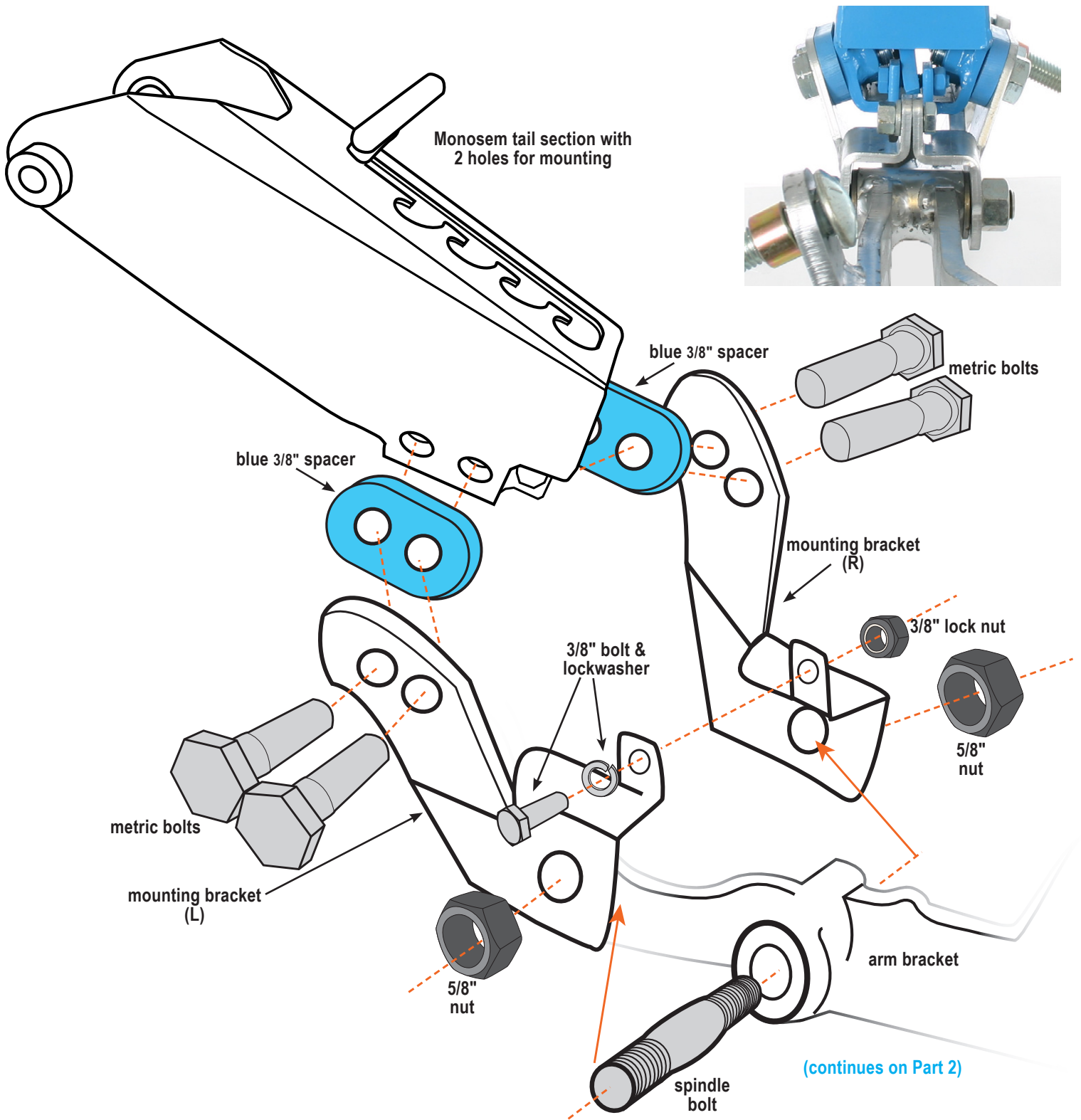
[For additional mounting instructions on Installing the Fertilizer Bracket & Disc to the Arm Bracket and Installing Closing Wheels to the Arm Bracket, please see Part 2: Mounting Instructions.]

OVER →

G2™ G3™ G4™ MOUNTING INSTRUCTIONS

Part 1 of 2: Installing the Arm Bracket to the Tail Section

Monosem Planters



[For additional mounting instructions on Installing the Fertilizer Bracket & Disc to the Arm Bracket and Installing Closing Wheels to the Arm Bracket, please see Part 2: Mounting Instructions.]

G2™ G3™ G4™ MOUNTING INSTRUCTIONS

Part 2 of 2: Installing Fertilizer Bracket, Disc, and Closing Wheels to Arm Bracket

G3

Before working on your planter or drill

DANGER: When storing or working on the planter always install cylinder stops or place the planter on stands to prevent personal injury or damage to the attachments.

PLEASE: Read instructions completely and verify all package contents before beginning installation.

!! NOTE: There are **left-hand** and **right-hand** G2, G3, and G4 units. Lefts and Rights are determined facing planter from the back.

!! NOTE: WHEN YOU PICK THE PLANTER UP, THE GAUGE WHEEL WILL HIT THE PRESS WHEEL. When you set the planter back down, the gauge wheel will go forward and the tail section will go backward so that they will not hit while running in the field. **WHEN INSTALLING THE G2/G3/G4 EITHER TIE THE GAUGE WHEEL FORWARD OR THE TAIL SECTION UP.**

Continued from Part 1: Mounting Instructions.

For additional mounting instructions on installing the Arm Bracket to the Tail Section, please see Part 1.

Part 2 of 2 Parts List G3

G3 Fertilizer Disc Package Contents (per single row)

(continued from part 1)

Item	Quantity
G3 Arm	1

G3 Wheel Bolt Package Contents (per single row)

(continued from part 1)

Item	Quantity
5/8" x 3-1/2" Carriage Bolt	2
5/8" Nut	2 +2
	(except Horsch)
1/2" Spacer	2
1/4" Spacer	2

Installing the Closing Wheels to the Arm Bracket

- Slide the carriage bolts through the holes on the ends of the arm. The bolt heads should be in the inside, with the threads pointing outwards.
- Next, slide the spacers over the bolts as follows:
REAR, straight arm—one 1/2" & one 1/4" spacer
FRONT, cut-out arm—one 1/2" spacer
- Place closing wheels on the bolts after the spacers and hold in place with the nuts. Tighten nuts.

*If mounting Zipper Wheels:

GOLD SPIKES—Right

SILVER SPIKES—Left

