

# DUAL PLACEMENT FERTILIZER TUBES IN-BETWEEN

## Case IH 2100

Before working on your planter or drill

**DANGER:** When storing or working on the planter always install cylinder stops or place the planter on stands to prevent personal injury or damage to the attachments.

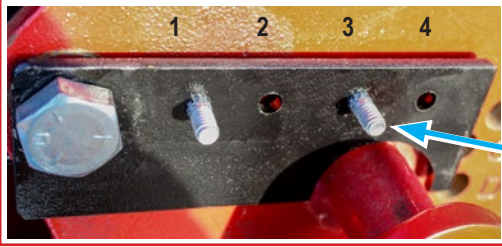
**PLEASE:** Read instructions completely and verify all package contents before beginning installation

**NOTE:** There are left-hand and right-hand fertilizer tubes for IH 2100 series planters. (Lefts and rights are determined facing planter from back. Right tube, when mounted, will curve out to the right, and left will curve out to the left.)

Make sure the lead opening disc and lead covering disc are on the same side of each row unit.

**DUE TO VARIATIONS IN THE MANUFACTURING PROCESS, SOME TWEAKING TO THE TUBE OR MOUNTING LOCATIONS MAY BE NECESSARY TO PROPERLY ALIGN INJECTOR**

\*Use holes 1 and 3 for Leading Disc Side.\*  
\*Holes 2 and 4 are for Trailing Disc Side.\*



1/4" sickle section bolts and whiz nuts

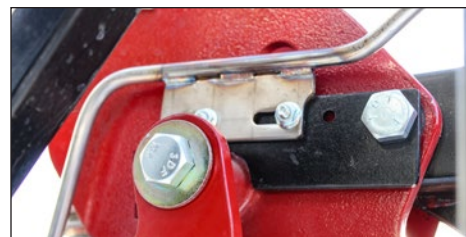
**STEP #1:** Remove structural bolt from top right of Case IH row unit, KEEP THIS BOLT. Place ribbed neck sickle section bolts in tube mounting plate on the INSIDE,\* using either the 1st and 3rd holes, or 2nd and 4th, depending on which side you are mounting. Re-insert structural bolt through mounting plate and use two washers on INSIDE of the bolt\* to keep mounting plate parallel with row unit.



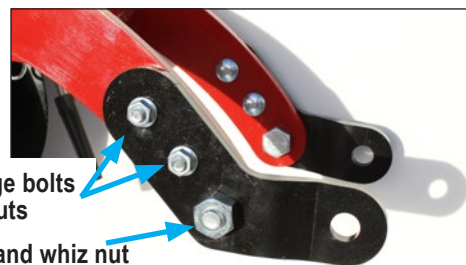
\* (2 washers as seen in STEP #1)

**STEP #2:** Mount fertilizer tube with 1/4" whiz nuts, making sure there is 3/4"-1" space between tube and disc blade\*.

(see back side for illustration of final placement)



**STEP #3:** Finish assembly by mounting set-back brackets (marked L & R) first with the 2 - 3/8" carriage bolts and whiz nuts, then the 5/8" bolt and whiz nut. Finally replace your standard or Chicken Tracker™ press wheel into the back holes in the set-back brackets with original wheel axle.



3/8" carriage bolts and whiz nuts

5/8" bolt and whiz nut

**OVER** →

### Case IH 2100 In-Between Fertilizer Tubes Package Contents (per single row)

Item	Qty DUAL	SINGLE
Tube Mounting Plate (Left and Right) . . . . .	2	1
Fertilizer Tube (Right and Left) . . . . .	2	1
1/4"-20x3/4" Sickle Section Bolt. . . . .	4	2
1/4"-20 Whiz Nut. . . . .	4	2
5/8"x1-1/4" 14 GA Washer. . . . .	4	2
2.5" of 3/8" Black Hose . . . . .	2	1
3/8" Y . . . . .	1	N/A
Tie Strap. . . . .	1	N/A
Rubber Boot. . . . .	2	1
Hose Clamp . . . . .	6	3

### Case IH 2100 Set-Back Bracket Kit Package Contents (per single row)

Item	Qty DUAL	SINGLE
5/8" Whiz Nut . . . . .	2	2
5/8"x1-1/4" Bolt. . . . .	2	2
3/8" Whiz Nut . . . . .	4	4
3/8"x1-1/4" Carriage Bolt . . . . .	4	4
Set-Back Brackets (Left and Right). . . . .	2	2
Instruction Sheet . . . . .	1	1

### Injector Orifice Package Contents (per single row—use if needed)

Item	Qty DUAL	SINGLE
Injector Orifice (High Pressure Nozzle)* . . . . .	2	1
*Orifice sizes vary according to planned gallons per acre (gpa) and speed (mph). Specify when ordering.		
Orifice & Fertilizer Chart . . . . .	1	1

# DUAL PLACEMENT FERTILIZER TUBES IN-BETWEEN

## Case IH 2100

Before working on your planter or drill!

**DANGER:** When storing or working on the planter always install cylinder stops or place the planter on stands to prevent personal injury or damage to the attachments.

**PLEASE:** Read instructions completely and verify all package contents before beginning installation

Slide the 3/8" black hose over the top ends of the fertilizer tubes. Secure in place with hose clamp.

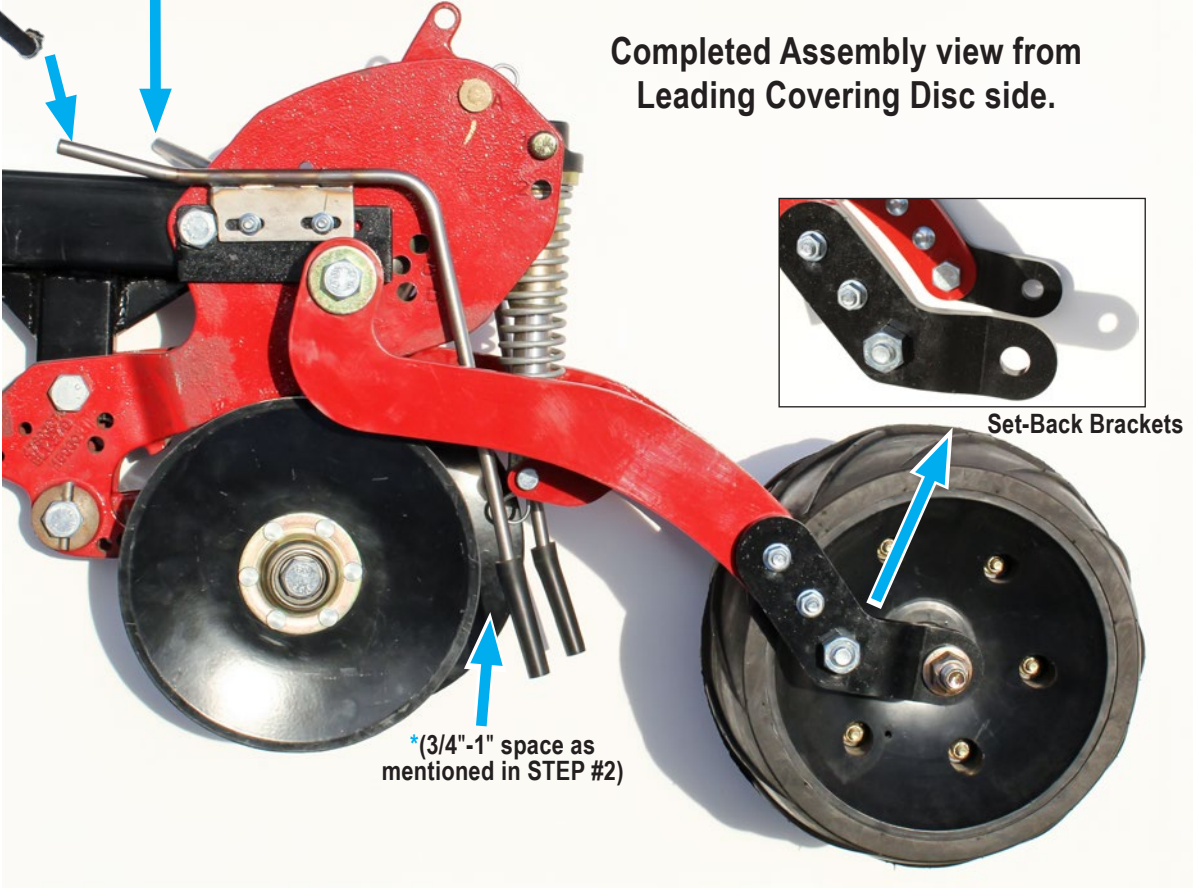
For dual tubes, slide hose clamps over black hose, insert split ends of Y into the tops of hoses, and tighten hose clamps in place. Use tie strap to hold uses together.



**Single Hose & Optional Fitting for Dual Tubes—**

- 1/4" to 3/8" for applying up to 10-12GPA
- 3/8" to 3/8" for applying 12+GPA (up to 30-40)
- 1/2" to 3/8" for applying 12+GPA (up to 30-40)

Completed Assembly view from Leading Covering Disc side.



Set-Back Brackets

\*(3/4"-1" space as mentioned in STEP #2)



Screw injector orifice into the end of the adjustable threaded tube guide that will be pointing down. The orifice end with the small hole is screwed in towards the inside of the tube, with the colored end towards the outside. Tighten orifice with 5/32" Allen wrench.

**NOTE:** If orifice starts hard, use a 5/16-24 standard tap threader to clean out the tube's threads.

After you've installed the injector orifices, slide the rubber boot up over the ends of the tube. Secure in place with hose clamp.

**NOTE:** You can cut off the ends of the boots if they're too long.