

G2 MOUNTING INSTRUCTIONS

Installing the G2 Fertilizer Kit on Planters

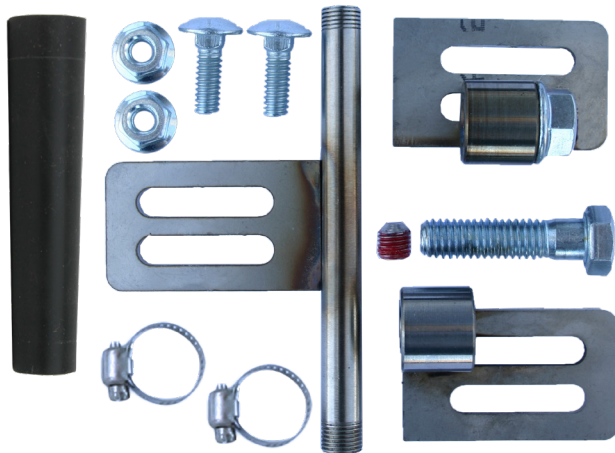
Part # G2FR TKL / G2FR TKR

Before you begin, verify all "package contents" items

NOTE: There are left-hand and right-hand G2 units.



G2FR TK-L/R	
Package Contents : G2FDMBHL/R	
Qty	Item
1	G2 Fertilizer Bracket (Left or Right)
1	5/8" x 3" Bolt
1	5/8" Lock Nut
1	1/2" Spacer
1*	1/4" Spacer *some kits may include extra spacer

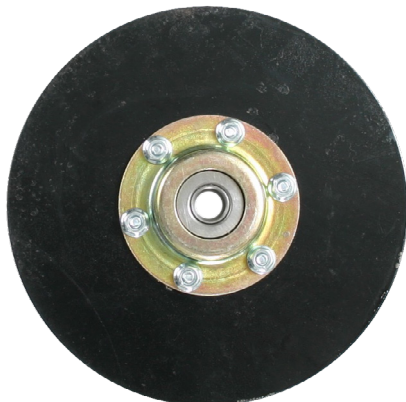


G2FR TK-L/R	
Package Contents : G2FABK	
Qty	Item
1	Threaded Fertilizer Tube with Tab
2	1/4" x 3/4" Carriage Bolt
2	1/4" Whiz Nut
2	3/4" #6 Hose Clamp
1	Rubber Boot
	Fertilizer Adjustable Bracket
1	<i>FAB includes: Center Pivot with Welded Nut</i>
1	<i>FAB includes: Outer Pivot</i>
1	<i>FAB includes: 3/8" x 1-3/4" SS Bolt</i>
1	Set Screw Injector Orifice (sizes vary)
1	Orifice & Fertilizer Chart (not pictured)

G28BDH / G29BDH	
Package Items	
Qty	Item
1	Smooth Disc Blade Assembly (8" or 9")

OR

G2PTBDHL / G2PTBDHR	
Package Items	
Qty	Item
1	9" Serrated STP Disc Blade Assembly (Left or Right)



OR



G2 MOUNTING INSTRUCTIONS

Installing the G2 Fertilizer Kit on Planters

INSTALLING THE FERTILIZER BRACKET & DISC

NOTE: There are left-hand and right-hand G2 fertilizer brackets.



OR

Package Contents Used In This Section	
Qty	Item
1	Smooth or Serrated STP Disc Blade Assembly
1	G2 Fertilizer Bracket (Left or Right)
1	5/8" x 3" Bolt
1	5/8" Lock Nut
1	1/2" Spacer
1*	1/4" Spacer *some kits may include extra spacer

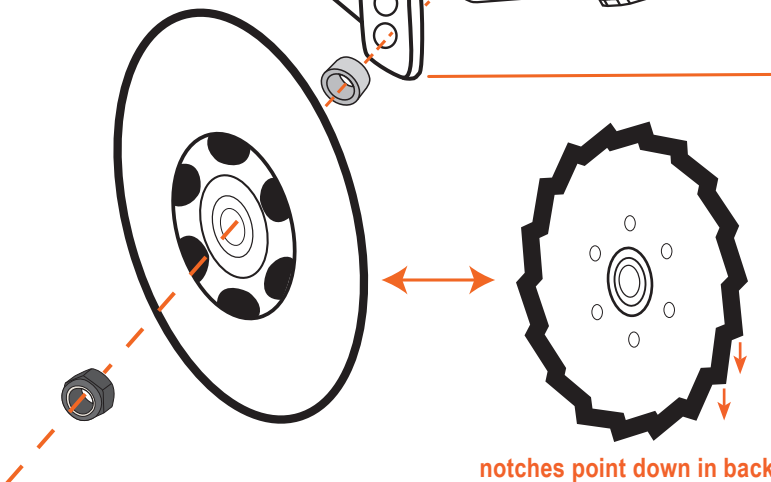
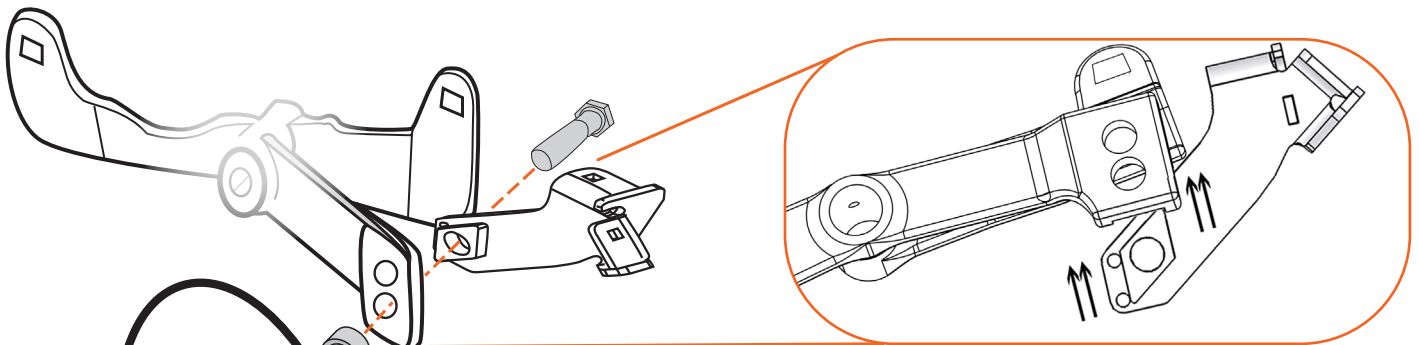


STEP #1:

Slide the diamond-shaped wedge end of the fertilizer bracket up into the slotted notch on the backside of the shim, over the two holes.

Insert the 5/8" x 3" bolt through the fertilizer bracket first, then the shim and disc mounting plate.

NOTE: There are two holes of adjustment for the fertilizer disc on the arm bracket. From the top down, they are 1" and 1-3/4" disc depth. **Most producers use the bottom hole.** If using the top hole, you may have to reverse the bolt to fit.



notches point down in back

STEP #2:

Slide 1/2" spacer, and then fertilizer disc assembly (with hub and nuts facing out, away from the arm bracket) over the bolt.

*Some kits may include an extra 1/4" spacer. This spacer can be used in lieu of or in addition to the 1/2" spacer to achieve the desired distance.

Thread 5/8" lock nut on bolt and tighten into place.

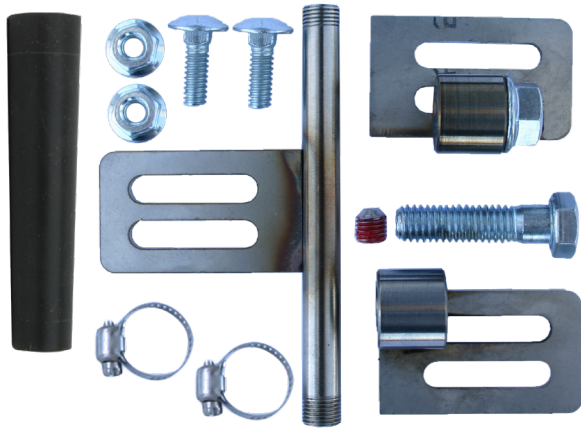
NOTE: IF USING NOTCHED FERTILIZER DISC, assemble with the notches on the disc pointing **DOWN IN THE BACK.**

OVER →

G2 MOUNTING INSTRUCTIONS

Installing the G2 Fertilizer Kit on Planters

ASSEMBLING THE PIVOTABLE FERTILIZER KIT



Package Items Used In This Section	
Qty	Item
1	Threaded Fertilizer Tube with Tab G2SST
2	1/4" x 3/4" Carriage Bolt
2	1/4" Whiz Nut
2	3/4" #6 Hose Clamp
1	Rubber Boot
Fertilizer Adjustable Bracket G2FAB	
1	FAB includes: Center Pivot with Welded Nut
1	FAB includes: Outer Pivot
1	FAB includes: 3/8" x 1-3/4" SS Bolt
1	Set Screw Injector Orifice (sizes vary)
1	Orifice & Fertilizer Chart (not pictured)

STEP #3:

Screw injector orifice into the end of the adjustable threaded tube guide that will be pointing down.

The orifice end with the small hole is screwed in towards the inside of the tube, with the color coated end towards the outside.

Tighten orifice with 5/32" Allen wrench.



NOTE: *Low pressure 5# to 25# will place fertilizer about 3/4" to 1" deep into the soil. High pressure 25# to 40# will inject the fertilizer from 1-1/2" to 2" deep into the soil.

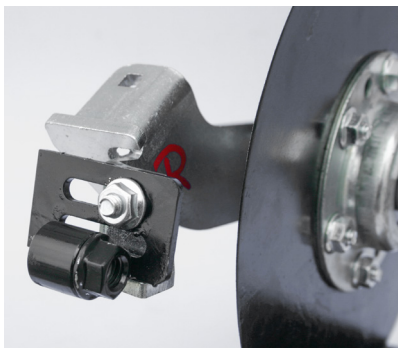
The high pressure injector orifice puts on from 2 to 40 GPA of fertilizer by injecting it deeper into the soil.

Caution when using high pressure, it may cause fertilizer to splash on the planter.

STEP #4:

Using one of the carriage bolts and whiz nuts provided, bolt the adjustable bracket with center swivel piece and welded nut to the rear section of the fertilizer bracket on your G2.

The welded-on nut should be on the same side of the bracket as the disc.

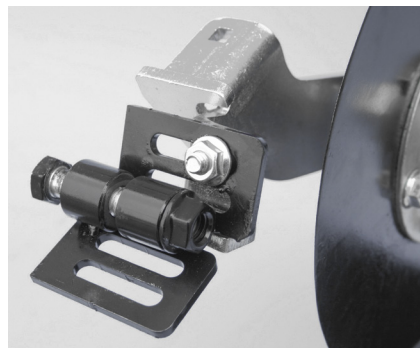


STEP #5:

The adjustable bracket with swivel piece towards the outside should be attached next, held in place with the bolt provided.

Make sure the head of the bolt is on the opposite side of the bracket as the disc.

Do not tighten bolt until after final adjustments have been made.



STEP #6:

Use the other carriage bolt and whiz nut to attach the adjustable threaded tube guide to the back (outside) of the adjustable bracket with outer swivel piece.

Make sure the end with the injector orifice is pointed down.



OVER →

G2 MOUNTING INSTRUCTIONS

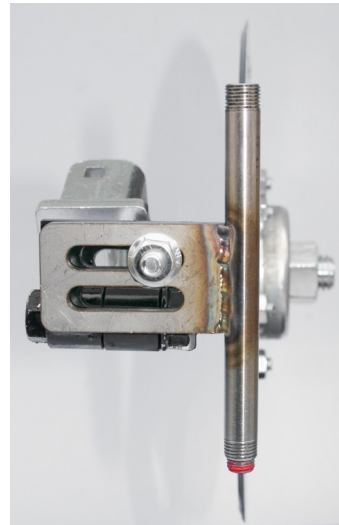
Installing the G2 Fertilizer Kit on Planters

(CONT.) ASSEMBLING THE PIVOTABLE FERTILIZER KIT

STEP #7:

Adjust the brackets in and out so that the threaded tube guide lines up directly behind the G2 fertilizer disc.

Angle the back adjustable bracket so that the fertilizer shoots in the desired distance from the G2 disc.



STEP #8:

Slide the thicker end of the rubber boot up over the bottom end of the threaded tube guide.

Slide the hose clamp over the top of the rubber boot. It should sit near the "top" of the rubber boot, approximately where the threaded end of the tube is.

Tighten hose clamp.

Use the other hose clamp for your hose coming into the top end of the threaded tube guide.



NOTE: Photos show tube guide and fertilizer kit used by the G4.

STEP #9:

Tighten all bolts and nuts.

final kit assembly

