

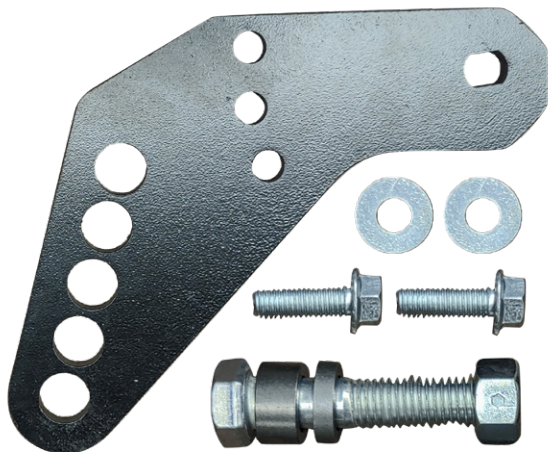
G4 MOUNTING INSTRUCTIONS

Installing the G4 Fertilizer Kit on Planters

Part # G4FRTKL / G4FRTKR

Before you begin, verify all "package contents" items

NOTE: There are left-hand and right-hand G4 units.



G4FRTK-L/R	
Package Contents : G4FMBN	
Qty	Item
1	G4 Fertilizer Disc Mounting Plate Bracket
2	3/8" Flat Washer
2	3/8" x 1-1/4" NC Grade 5 Spin Lock Bolt
	Bolt & Staked Lock Nut Assembly
1	includes: 5/8" x 3" NC Bolt
1	includes: 5/8" x 1/2" Spacer
1	includes: 5/8" x 1/4" Spacer
1	includes: 5/8" Lock Nut

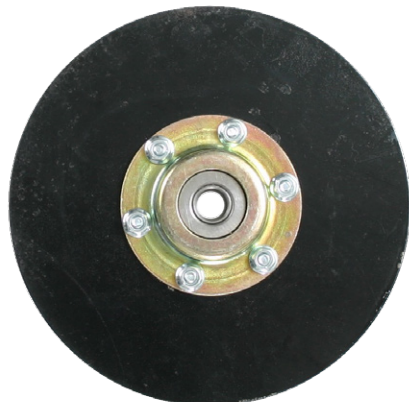


G4FRTK-L/R	
Package Contents : G4FTL/R	
Qty	Item
1	Threaded Fertilizer Tube with Tab
1	Threaded Tube Mounting Bracket (Left or Right)
1	3/8" x 1" Carriage Bolt
1	3/8" Spin Lock Nut
1	3/4" Hose Clamp
1	Rubber Boot
1	Set Screw Injector Orifice (sizes vary)
1	Orifice & Fertilizer Chart (not pictured)

G28BDH / G29BDH	
Package Items	
Qty	Item
1	Smooth Disc Blade Assembly (8" or 9")

OR

G2PTBDHL / G2PTBDHR	
Package Items	
Qty	Item
1	9" Serrated STP Disc Blade Assembly (Left or Right)

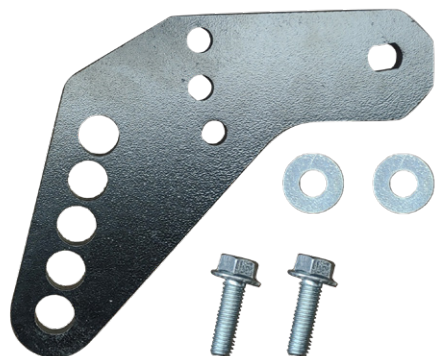


OR



G4 MOUNTING INSTRUCTIONS

Installing the G4 Fertilizer Kit on Planters



INSTALLING THE FERTILIZER DISC MOUNTING PLATE

STEP #1:

The fertilizer disc mounting plate attaches to the G4 arm with the two 3/8" spin lock bolts and flat washers.

Thread one bolt through the mounting plate's single front hole.

Stack both washers over the bolt against the plate as shown in the photo. Wedged between the G4 arm and disc mounting plate, the washers will pitch the disc angle.



STEP #2:

Install this assembly to the front threaded mounting plate hole on the G4 arm as shown.



STEP #3:

Install the remaining lock bolt through the top of the middle three holes of the disc mounting plate, as shown in the photo.

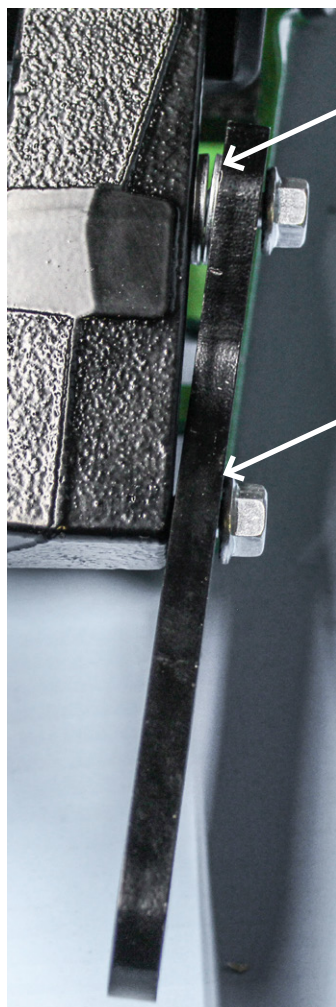
This is the starting point for a 9" fertilizer disc.

Tighten this rear bolt first.

Then, tighten the front bolt.



Package Contents Used In This Section	
Qty	Item
1	G4 Fertilizer Disc Mounting Bracket G4FMBN
2	3/8" Flat Washer
2	3/8" x 1-1/4" NC Grade 5 Spin Lock Bolt



The washers pitch the disc out on front and in on the back. This will pitch dirt to the row.

The disc will run straight with the row if the washers are placed on the outside.

If so desired, put the washers on the inside back. This will pitch the disc in on front and out on the back to pitch dirt away from the row.

This is how the bracket should look from below after tightening bolts.

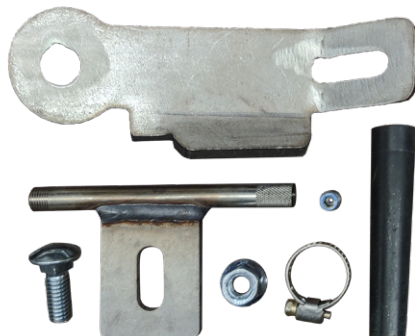
NOTE: Photo taken from the under side of arm

↑ Direction of travel ↑

G4 MOUNTING INSTRUCTIONS

Installing the G4 Fertilizer Kit on Planters

ASSEMBLING THE FERTILIZER KIT



Package Items Used In This Section	
Qty	Item
1	Threaded Tube Mounting Bracket G4DFLH (L or R)
1	3/8" x 1" Carriage Bolt
1	3/8" Spin Lock Nut
1	Threaded Fertilizer Tube with Tab SSIH21THB
1	Rubber Boot RB
1	3/4" Hose Clamp
1	Set Screw Injector Orifice (sizes vary)

STEP #4:

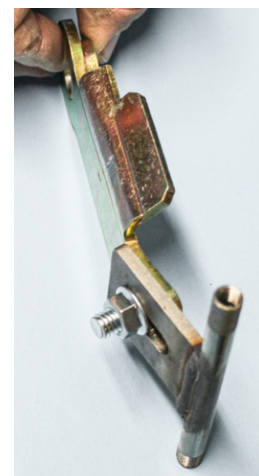
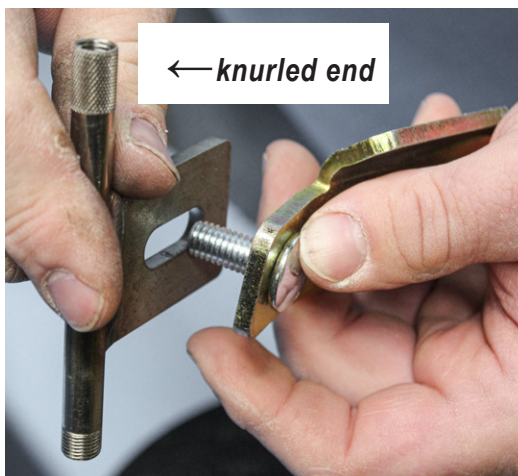
Fasten the SSIH21 stainless fertilizer tube with welded-on tab to the G4DF tube mounting bracket utilizing the 3/8" carriage bolt and lock nut.

The bolt should be threaded through from the "inside" of the mounting bracket, and tube's tab installed to the "outside" of the bracket.

Note the knurled end of the fertilizer tube, and make sure it is pointing the same direction as the photo. It will be pointing "down" at final installation.

Secure tab in place with lock nut on the "outside".

Square the two brackets and tighten nut with a 9/16 end wrench.



STEP #5:

INSTALLING THE INJECTOR ORIFICE

Install the set screw injector orifice (if applicable) into the knurled end of the SSIH21 tab tube and snug (do not over tighten) with an Allen wrench.



STEP #6:

INSTALLING THE RUBBER BOOT

After installing the injector orifice, slip the hose clamp over the knurled end of the tube.

Then push the rubber boot over the knurled end of the tube.

Slide the hose clamp over the top of the rubber boot. It should sit near the "top" of the rubber boot, approximately where the knurled end of the tube is.

Tighten hose clamp.



G4 MOUNTING INSTRUCTIONS

Installing the G4 Fertilizer Kit on Planters



INSTALLING THE FERTILIZER TUBE & DISC

Package Items Used In This Section	
Qty	Item
1	9" Disc Blade (L or R)
	Bolt & Staked Lock Nut Assembly
1	includes: 5/8" x 3" NC Bolt
1	includes: 5/8" x 1/2" Spacer
1	includes: 5/8" x 1/4" Spacer
1	includes: 5/8" Lock Nut

STEP #7:

Use the 5/8" x 3" bolt to install the fertilizer tube assembly onto the G4FMBN fertilizer disc mounting plate.

The starting place is the second hole from the bottom along the back of the mounting plate.

Slide the bolt through this second hole of the G4FMBN bracket with the head of the bolt on the same side as the G4 arm and closing wheel.

Next, install the fertilizer tube assembly over the bolt so that it sits against the bracket.

Then, on the "outside" of the fertilizer tube, install the 1/2" and 1/4" spacers over the bolt.

STEP #8:

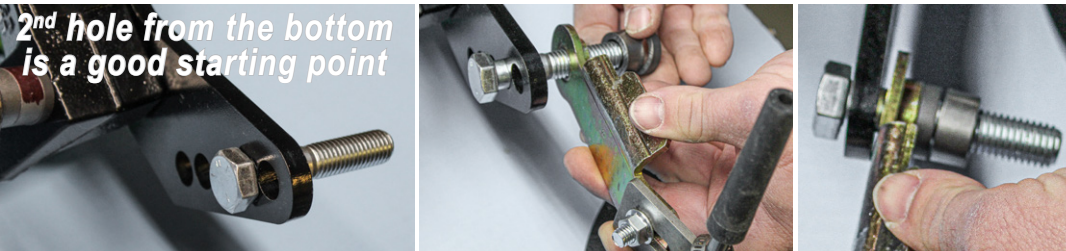
After the spacers, slide the fertilizer disc blade over the 3" bolt.

The hub of the disc blade should be facing "out", or away from the assembly.

Secure the assembly in place with the 5/8" lock nut from the assembly.

Bolt → G4 Disc Mount Plate ← Fertilizer Tube Assembly ← 1/2" + 1/4" Spacers ← 9" Disc ← Nut

2nd hole from the bottom is a good starting point



NOTE: Photos taken from the under side of arm

STEP #9:

Align the fertilizer tube assembly while the planter is in the field in the ground. The bottom of the rubber boot should be 1"-2" off the ground.

Tighten nut into place.



Final Assembly on John Deere/OEM

