

G2 / G3 / G4 MOUNTING INSTRUCTIONS

Installing the G2 G3 G4 Arm on 4-Link Closer

4-Link Closer – 4-Link Force

PLEASE NOTE:

- Instructions are applicable to the G2, G3, and G4 arms.
- There are left-hand and right-hand G2, G3, and G4 units.
- Many photos included in the instructions were taken from the under side of the 4LC or OEM tail section.

Before you begin, verify all "package contents" items
Qty is per single row



4LCG2MB50	
Package Contents : Step #1 Installing the Walking Beam Mounting Brackets	
Qty	Item
2	G2/G3/G4 4LC Mounting Ears
4	3/8" x 1" Carriage Bolt
4	3/8" Whiz Nut



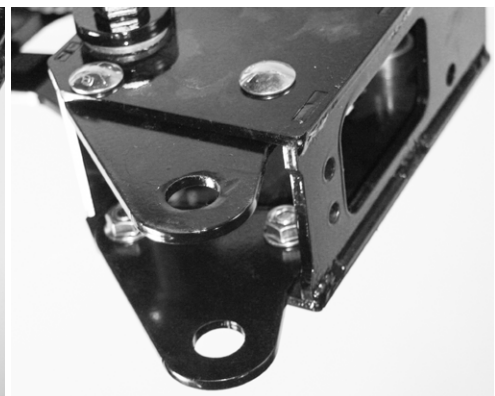
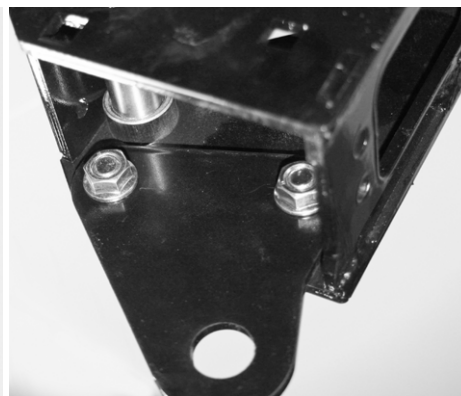
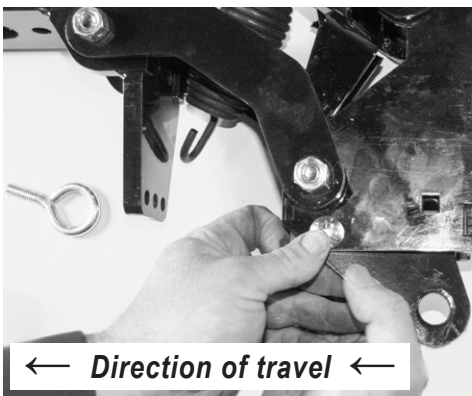
G2AL/R, G2CAL/R, G3AL/R, G4AL/R Package Contents : Step #3-5 Installing the Walking Beam to the Mounting Brackets

Qty	Item
1	G4 Arm (L or R) OR G3 Arm (L or R) OR G2 Arm (L or R)
1	Hardened Pipe Spacer
1	1/2" x 3-1/4" NC Grade 5 Bolt
1	1/2" NC Spin Lock Nut

STEP #1: INSTALLING THE WALKING BEAM MOUNTING BRACKETS

Using the 3/8" carriage bolts and whiz nuts, bolt up both ears with large hole sticking out to the rear of the 4LC.

The bolts should be installed from the outside of the 4LC. Install the mounting ears on the inside of the 4LC, and hold in place with the whiz nuts.



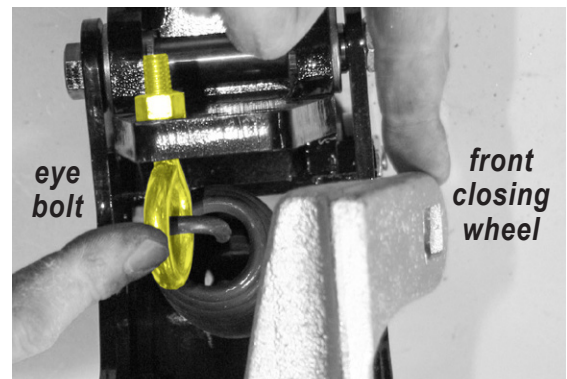
← Direction of travel ←

STEP #2:

Place spring eye bolt to the opposite side of the G2/G3/G4 walking beam arm's front wheel.

Tighten it down with eyelet straight up and down.

See photos for example.



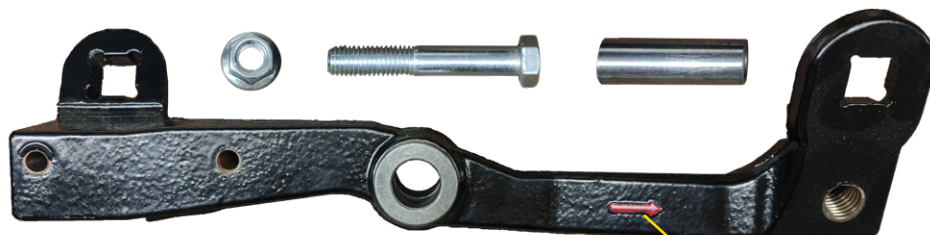
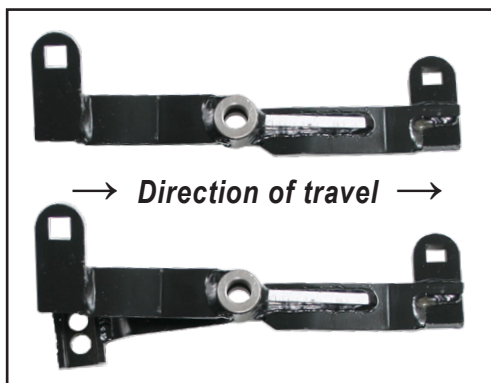
eye
bolt

front
closing
wheel

G2 / G3 / G4 MOUNTING INSTRUCTIONS

Installing the G2 G3 G4 Arm on 4-Link Closer

INSTALLING THE WALKING BEAM ARM



Weighted part goes toward → Direction of travel → Arrow points forward toward front of planter

Package Items Used In This Section

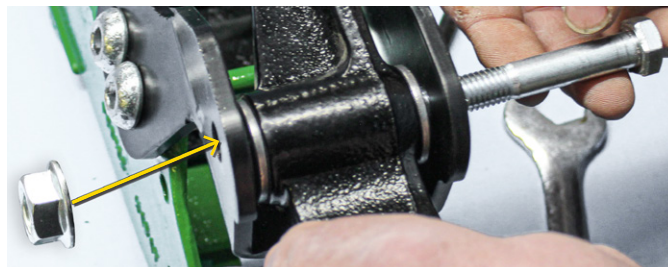
Qty	Item
1	G4 Arm (L or R) OR G3 Arm (L or R) OR G2 Arm (L or R)
1	Hardened Pipe Spacer
1	1/2" x 3-1/4" NC Grade 5 Bolt
1	1/2" NC Spin Lock Nut

STEP #3:

Take the G2/G3/G4 walking beam pivot arm and slide the hardened pipe spacer bushing into its center hole.



4LC arm mount is the same as on JD/OEM



STEP #4:

Slide G2/G3/G4 arm assembly between the walking beam mounting bracket ears you installed to the 4-Link tail section.

Install the arm in the direction where the arrow is pointed towards the front of the planter, and the weighted part is towards the back of the planter. The tabs with carriage bolt holes will be on the top side.

Install the 3-1/4" bolt through the center of the G2/G3/G4 arm and arm mounting brackets.

Make sure the bolt is threaded through from the same side as shown in photo, with the bolt head on the opposite side of the disc mounting plate holes. Doing so will aid removal of the arm when kit assembly is complete—so nothing will need to be removed to easily drop out the arm).

Secure in place with the other 1/2" spin lock nut.

Tighten with two wrenches.

FINALIZE G2/G3/G4 ARM MOUNT

STEP #5:

Now you are ready to tighten down all the nuts holding the arm mounting bracket together.

Use a wrench to tighten all four carriage bolts and nuts to the frame of the 4-Link tail section.

Finally, tighten the 1/2" bolt and spin lock nut at the center pivot of the G2/G3/G4 arm.



G4 arm final assembly on 4-Link Closer