

# G2 / G3 / G4 MOUNTING INSTRUCTIONS

## Installing the G2 G3 G4 Arm on Monosem

### Monosem Planters

#### !! PLEASE NOTE THE FOLLOWING:

- Instructions are for G4 Arm. These instructions can also be applied to the G2 and G3 Arms.
- There are left-hand and right-hand G2-G3-G4 units.  
Lefts and rights are determined facing the planter from the back behind it.
- Photos depict a John Deere tail section removed from the planter.
- Many photos included in the instructions were taken from the under side of the tail section.
- You do not need to remove the tail section. Mounting the G2-G3-G4 can be done on the planter.
- **DANGER:** When storing or working on the planter always install cylinder stops or place the planter on stands to prevent personal injury or damage to the attachments.
- **NOTICE:** WHEN YOU PICK THE PLANTER UP, THE GAUGE WHEEL WILL HIT THE PRESS WHEEL. When you set the planter back down, the gauge wheel will go forward and the tail section will go backward so that they will not hit while running in the field. WHEN INSTALLING THE G2-G3-G4 EITHER TIE THE GAUGE WHEEL FORWARD OR THE TAIL SECTION UP.

Before you begin, verify all "package contents" items. Qty is per single row.

GMMBK	
Package Contents : Step #2-3	
Installing the Walking Beam Mounting Brackets	
Qty	Item
1	Left Walking Beam Mounting Bracket
1	Right Walking Beam Mounting Bracket
2	M16 x 2.0 x 40 LH Bolt
2	M16 x 2.0 x 40 RH Bolt
1	3/8" x 1" NC Grade 5 Bolt



G2AL/R, G2CAL/R, G3AL/R, G4AL/R	
ARM KIT Package Contents : Step #5-7	
WHEEL BOLT KIT shown on Closing Wheels instructions	
Installing the Walking Beam to the Mounting Brackets	
Qty	Item
1	G4 Arm (L or R) OR G3 Arm (L or R) OR G2 Arm (L or R)
1	Hardened Pipe Spacer
1	1/2" x 3-1/4" NC Grade 5 Bolt
1	1/2" NC Spin Lock Nut



## REMOVE OEM WHEELS

### STEP #1:

Remove press wheels off the tail section.

You do not need to remove the tail section for G Series Arm installation.

# G2 / G3 / G4 MOUNTING INSTRUCTIONS

## Installing the G2 G3 G4 Arm on Monosem

### INSTALLING THE WALKING BEAM MOUNTING BRACKETS



#### Package Items Used In This Section

Qty	Item
1	Left Walking Beam Mounting Bracket
1	Right Walking Beam Mounting Bracket
2	M16 x 2.0 x 40 LH Bolt
2	M16 x 2.0 x 40 RH Bolt
1	3/8" x 1" NC Grade 5 Bolt
1	3/8" NC Nut
2	Blue Mounting Bracket Spacer

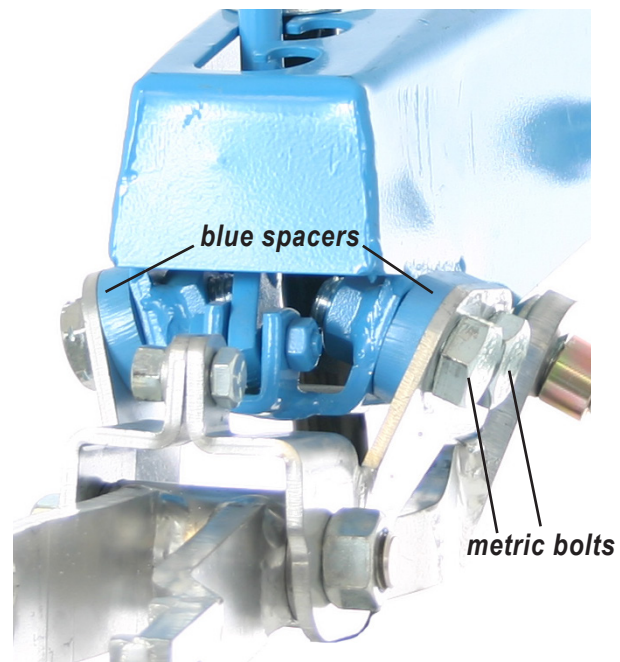
*To prevent metric bolts from coming loose, put lock tight under them prior to tightening.*

#### STEP #2:

Using the two RH metric bolts, install the right hand walking beam bracket to the tail section, **placing a blue spacer between tail section and mounting bracket.**

The bolts should be on the outside of the tail section.

Leave loose until both sides of the walking beam mounting bracket are fully installed.



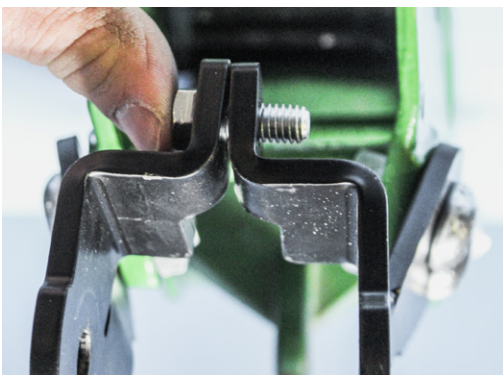
#### STEP #3:

Using the two LH metric bolts, install the left hand walking beam bracket to the tail section, **placing a blue spacer between tail section and mounting bracket.**

Leave loose.

#### STEP #4:

Fasten the right and left walking beam brackets together in the middle utilizing the 3/8" bolt and nut.

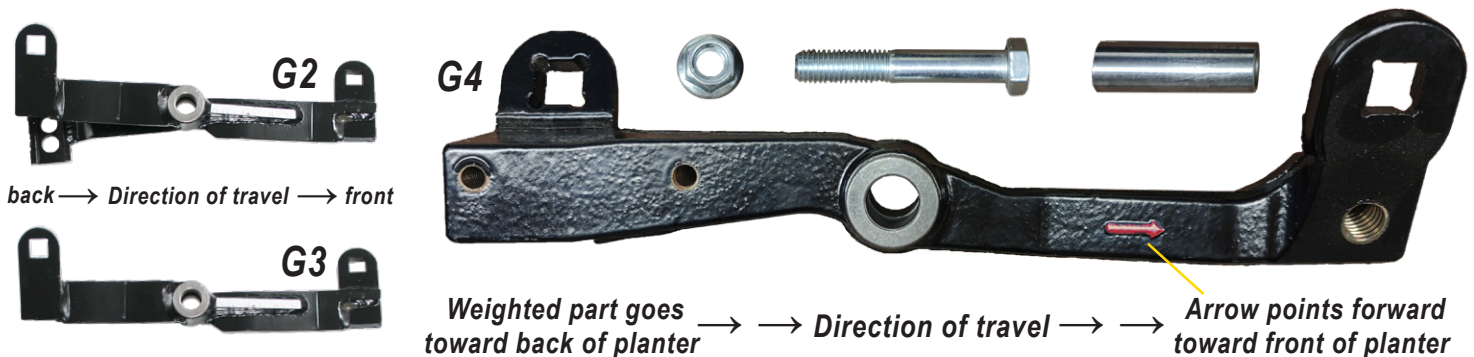




# G2 / G3 / G4 MOUNTING INSTRUCTIONS

## Installing the G2 G3 G4 Arm on Monosem

### INSTALLING THE WALKING BEAM ARM TO THE MOUNTING BRACKETS



#### Package Items Used In This Section

Qty	Item
1	G4 Arm (L or R) OR G3 Arm (L or R) OR G2 Arm (L or R)
1	Hardened Pipe Spacer
1	1/2" x 3-1/4" NC Grade 5 Bolt
1	1/2" NC Spin Lock Nut

#### STEP #5:

Take the G4 walking beam pivot arm (substitute this for G2 or G3 arm if applicable), and slide the hardened pipe spacer bushing into its center hole.



#### STEP #6:

Slide G2-G3-G4 arm assembly between the walking beam mounting brackets you installed to the tail section.

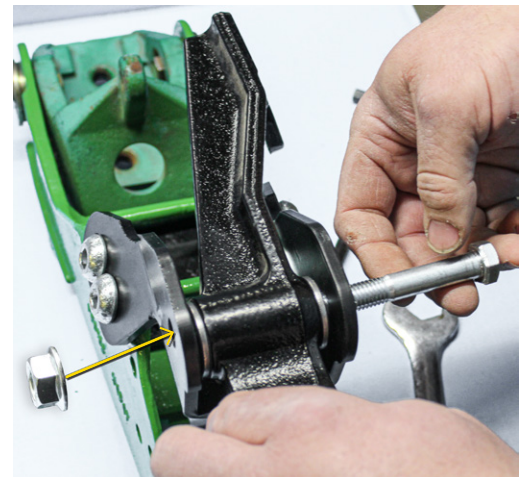
Install the arm in the direction where the arrow is pointed towards the front of the planter, and the weighted part is towards the back of the planter. The tabs with carriage bolt holes will be on the top side.

Install the 3-1/4" bolt through the center of the G2-G3-G4 arm and arm mounting brackets.

Make sure the bolt is threaded through from the same side as shown in photo, with the bolt head on the opposite side of the disc mounting plate holes. Doing so will aid removal of the arm when kit assembly is complete—so nothing will need to be removed to easily drop out the arm).

Secure in place with the other 1/2" spin lock nut.

Tighten with two wrenches.



### FINALIZE G SERIES ARM MOUNT

#### STEP #7:

Now you are ready to tighten down all the nuts holding the arm mounting bracket together.

Put lock tight under the button head bolts to prevent them from coming loose. Then tighten all four button head bolts and nuts to the frame of the tail section with 3/8" Allen wrench and 15/16 end wrench.

Tighten the 3/8" bolt and nut around the arm with two 9/16 end wrenches.

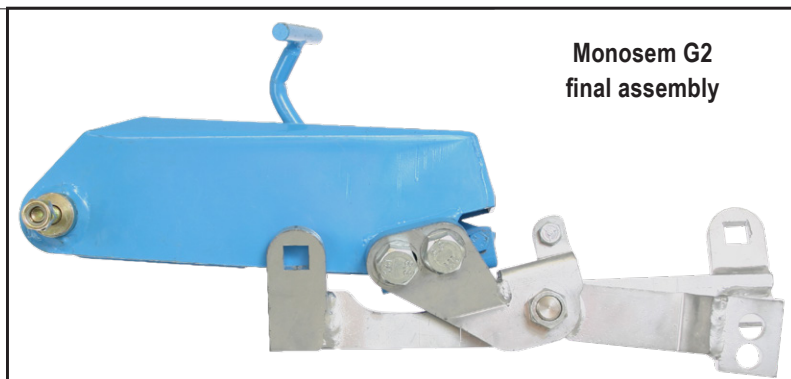
Finally, tighten the 1/2" bolt and spin lock nut at the center pivot of the G2-G3-G4 arm.



G4 arm final assembly on John Deere tail section

# G2 / G3 / G4 MOUNTING INSTRUCTIONS

## Installing the G2 G3 G4 Arm on Monosem



Monosem tail section with 2 holes for mounting

