

NEW!

DOUBLE V ZIPPER™ CLOSING WHEELS

NEW WHEEL & ARM ASSEMBLY FOR JOHN DEERE AIR SEEDERS

JD 1560 1590 1690 1835 1860 1890 1895 1990 DRILLS



- **NEW** John Deere 1890-1990 closing wheel arm
- **NEW** Double V Zipper closing wheel
- Replaces OEM angled cast closing wheel and arm
- Eliminates press wheel in center
- Helps eliminate wear on pins and bushings on row units
- Replace the John Deere seed tab with the **Rebounder® Seed Cover**
- **Rebounder with Straight Shot™** for fertilizer eliminates having to use metal fertilizer tubes
- **Chicken Tracker™** gauge wheel reduces mud build-up and lasts longer than OEM rubber tires



NEW JOHN DEERE 1890-1990 CLOSING WHEEL ARM

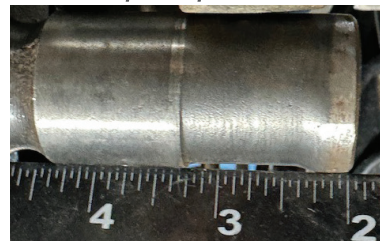
ADVANTAGES:

- Why not break both sides of seed V in rather than only one side with the JD OEM cast closing wheel
- Pulls in soil with less down pressure on row unit
- Runs over top of seed V rather than to one side of seed furrow
- Lets press wheel run straight up and down over top of seed furrow
- Pivot pins and bushings last longer due to less side pressure from OEM angled cast closing wheels
- Rebounder with concave design puts all seeds in bottom of seed furrow, eliminating having to use the OEM press wheel
- Rebounder now without press wheel can put fertilizer with the seed, eliminating mud build up on the back of the drill
- Double V Zipper breaks in both side walls of the seed V, eliminating side wall compaction
- Double V Zipper roto-tills the soil into the seed V, eliminating air pockets or an open seed V in no-till plantings
- Double V Zipper helps eliminate hair pinning of residue in the furrow
- Double V Zipper mellows the soil in the seed V to enhance plant growth and create a more even emergence

John Deere OEM cast arm and wheel versus SMC Double V Zipper cast arm and wheel



wear on pivot pin with OEM



Straight Shot Rebounder

SCHAFFERT MANUFACTURING COMPANY, INC.

Schaffert
manufacturing & sales



Indianola, Nebraska 69034

105 D Street
PO Box R

800-382-2607

sales@schaffert.com

WWW.SCHAFFERT.COM

NEW!

DOUBLE V ZIPPER™ CLOSING WHEELS

Angular cast closing wheel on JD 1890-1990 drills

With the Double V Zipper, one can eliminate the center 9" or 10" press wheel.



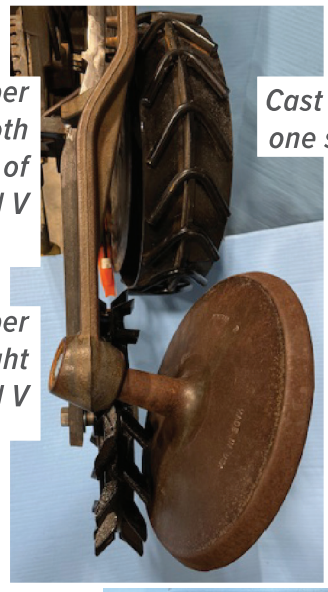
Adverse effect of too much side pressure on row units is premature wear on row units' pivot pins, making it expensive to repair.

← *Worn pivot pin*

\$32.00 - \$40.00
Cost of a replacement pivot pin, depending where you buy

Double V Zipper destroys both side walls of seed V

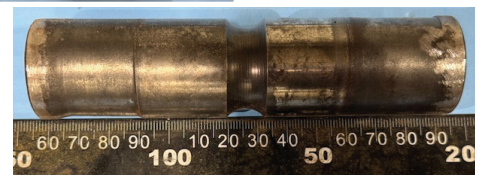
Double V Zipper runs in a straight line over seed V



Cast wheel only closes one side of the seed V

Angled cast closing wheel causes excessive wear on pivot pins up front. With Double V Zipper, the wear life of the pivot pins will be extended 2x-3x.

The pivot pin on JD 1890-1990 row units wears excessively due to the angular cast closing wheel putting lateral or side pressure on the row unit



4X16" CHICKEN TRACKER GAUGE WHEEL

ADVANTAGES:

- Replaces OEM gauge wheel tire
- Does not wear out like tire does
- 3x-4x better wear life
- Chicken Tracker without insert does not build up with mud on tines like rubber tire does



without welded inserts

with welded inserts

REBOUNDER WITH STRAIGHT SHOT

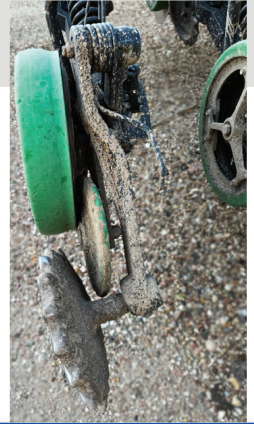
ADVANTAGES:

- Places fertilizer under the Rebounder in the furrow, directly on top of the seed
- Eliminate stainless fertilizer tubes that splatter fertilizer all over the back of your drill

Rebounder with Straight Shot for fertilizer

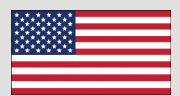


Standard metal tubes will splatter fertilizer all over the drill



SCHAFFERT MANUFACTURING COMPANY, INC.

Schaffert
manufacturing & sales



Indianola, Nebraska 69034

105 D Street
PO Box R

800-382-2607

sales@schaffert.com

WWW.SCHAFFERT.COM