

4 LINK CLOSER™ MOUNTING INSTRUCTIONS

Great Plains Planters

Before working on your planter or drill

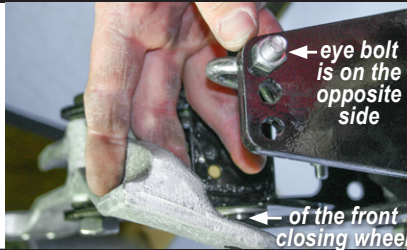
DANGER: When storing or working on the planter always install cylinder stops or place the planter on stands to prevent personal injury or damage to the attachments.

PLEASE: Read instructions completely and verify all package contents before beginning installation

SPRING EYE BOLT 3-HOLE PLACEMENT



NOTE: The spring eye bolt has intentionally been left loose from the factory. **Install this bolt to the OPPOSITE side of the front closing wheel on the G2/G3/G4 arm.** This will prevent the G2/G3/G4 arm bracket from hitting the eye bolt.



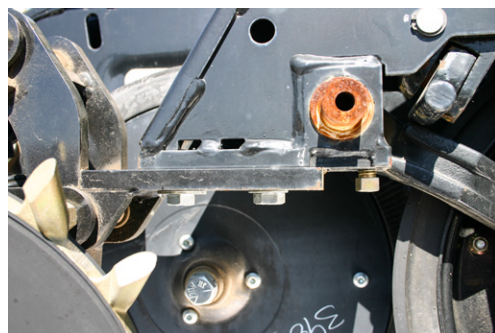
4 Link Closer for Great Plains

Package Contents (per single row)

Item	Quantity
4 Link Closer (complete assembly) . . .	1
Washer	1
Instruction Sheet	1

#1: Remove the Great Plains press tire and tail section assembly: Loose and remove the two vertical bolts holding tail section mount and spring assembly to row unit. **SAVE BOLTS!**

#2: Using these bolts, install 4LC on bottom of row unit where the mount was removed.
Place washer over the slotted hole between the 4LC and rear bolt.
Align with row unit and tighten bolts.



Final assembly of the 4LC with G2 fertilizer arm and Zipper closing wheels

