

4 LINK CLOSER™ MOUNTING INSTRUCTIONS

Case IH 800-1250 Series Planters with Precision Speed Meter

Before working on your planter or drill

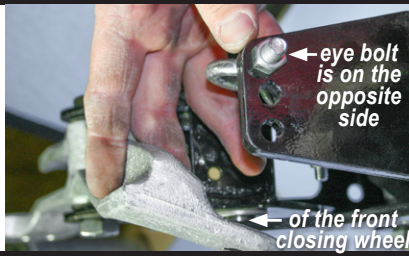
DANGER: When storing or working on the planter always install cylinder stops or place the planter on stands to prevent personal injury or damage to the attachments.

PLEASE: Read instructions completely and verify all package contents before beginning installation

SPRING EYE BOLT 3-HOLE PLACEMENT



NOTE: The spring eye bolt has intentionally been left loose from the factory. **Install this bolt to the OPPOSITE side of the front closing wheel on the G2/G3/G4 arm.** This will prevent the G2/G3/G4 arm bracket from hitting the eye bolt.



4 Link Closer for Case IH with Speed Meter Package Contents (per single row)

Item	Quantity
1/2" x 1-1/2" Bolt	2
1/2" Lock Nut	2
1/2" Flat Washer	2
3/8" x 3" U-bolt	2
3/8" Nut	8
5/16" x 2-1/2" Bolt	1
5/16" Nyloc Nut	1
Mounting Bracket	1
Template	1

REMOVING CASE IH PRESS TIRE & COVERING DISC ASSEMBLY

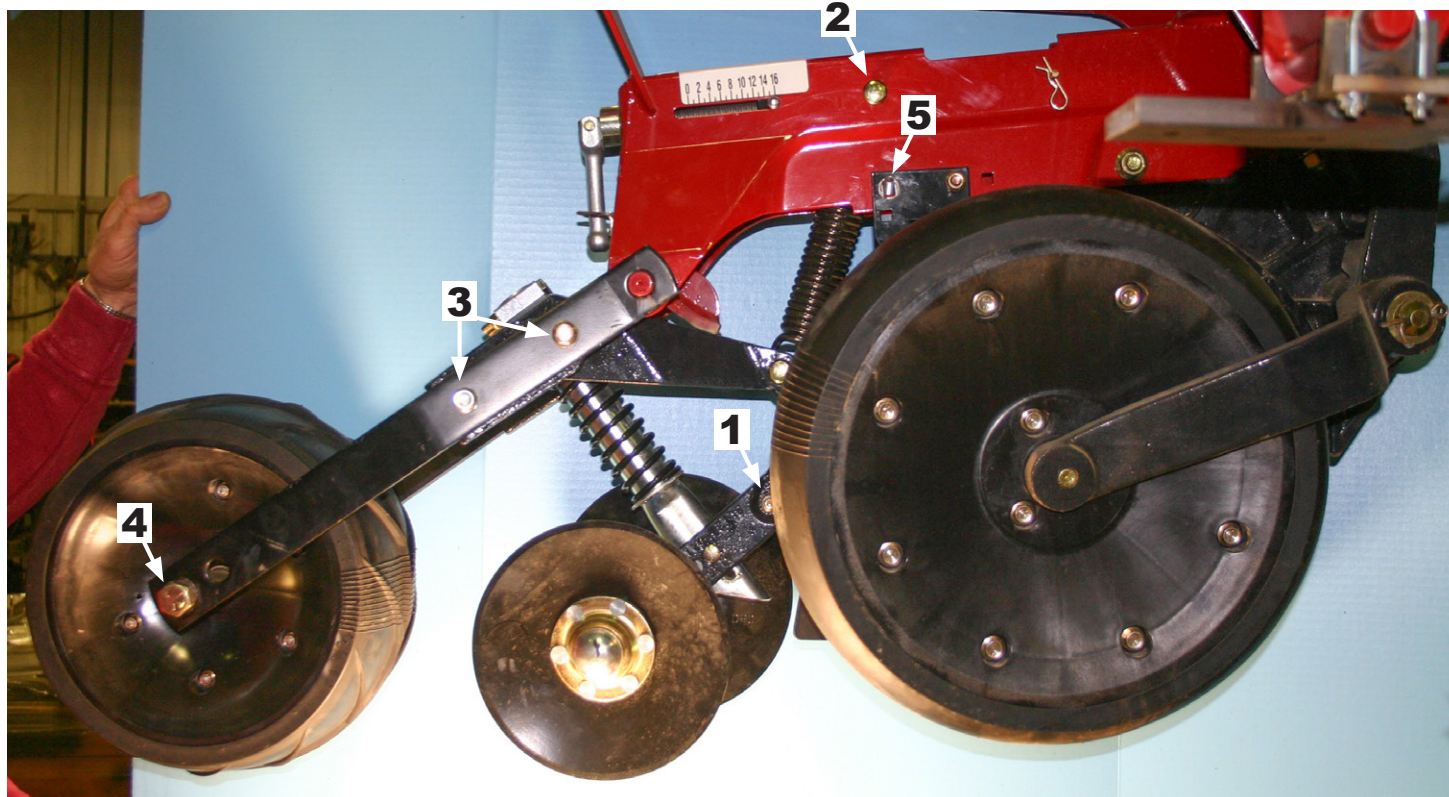
Step #1: Remove bolt that mounts covering discs assembly to rear of seed boot.

Step #2: Remove press tire down pressure spring and upper pin.

Step #3: Remove two bolts in press tire arm (one side is all that is needed).

Step #4: Loosen press tire through bolt. The whole assembly will now come off of unit.

Step #5: Remove opener disc blade scraper back bolts (on both sides).



OVER →

4 LINK CLOSER™ MOUNTING INSTRUCTIONS

Case IH 800-1250 Series Planters with Precision Speed Meter

(CONTINUED 2)

USING TEMPLATE TO DRILL HOLES

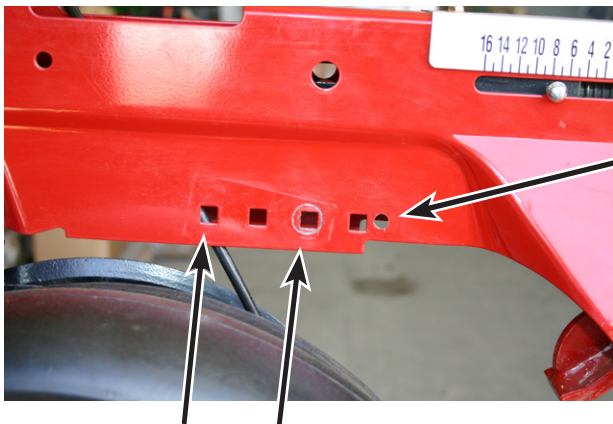
Step #6: Bolt on template with 5/16" bolt. The front two holes on the template are bolt holes. On the LEFT side, put the bolt through the 1st and 3rd holes from the front of the planter. On the RIGHT side, put the bolt through the 2nd and 4th holes from the front. Keep the template flush with the unit. When bolting, do one side then the other. **Do not bolt both at once!**

Step #7: The back hole is the hole you drill through. Drill a hole on each side of the unit, doing one side at a time.

LEFT SIDE

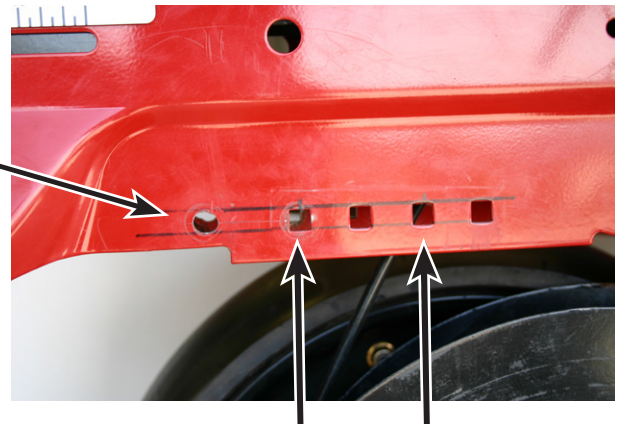


RIGHT SIDE



Drilled Hole

Bolt Template Here



Bolt Template Here

4 LINK CLOSER™ MOUNTING INSTRUCTIONS

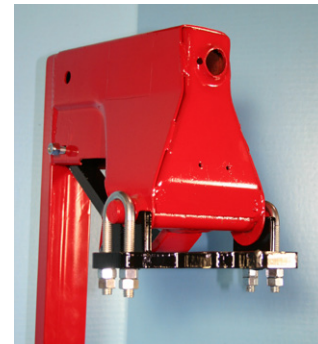
Case IH 800-1250 Series Planters with Precision Speed Meter

(CONTINUED 3)

INSTALLING MOUNTING BRACKET TO ROW UNIT

Step #8: Slide pipe mounted end up into row unit between opener disc scraper and install 5/16" x 2-1/2" bolt with 5/16" nyloc lock nut into rear scraper mounting bolt hole.

Step #9: Pivot up the assembly rearward so the 'u' shaped saddles cradle old press tire mounting pin. Install 3/8" x 3" u-bolts and tighten them down with 3/8" nuts. Tighten the 5/16" scraper bolt.



INSTALLING 4 LINK CLOSER TAIL SECTION

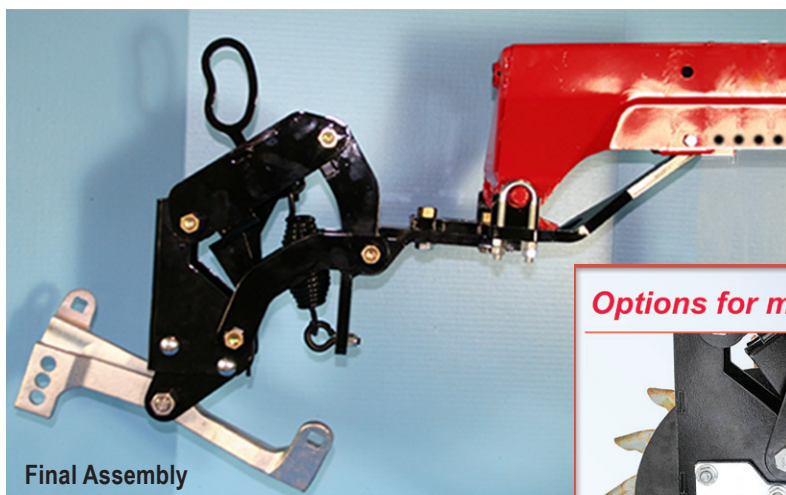
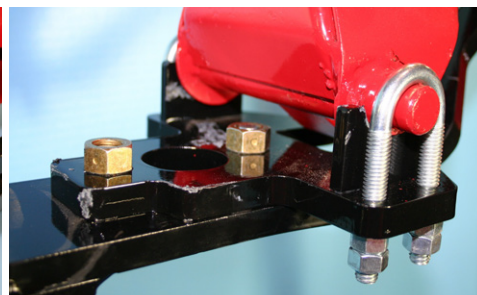
Step #10:

Using the 1/2" x 1-1/2" bolts, bolt the 4LC tail section under the Case IH tail section mounting bracket.

Place the 1/2" flat washer between the back bolt and tail section.

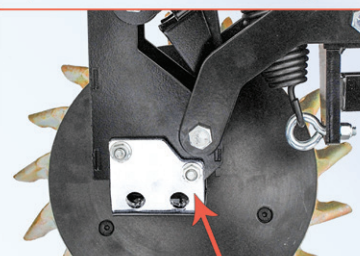
Align tail section with row unit (so it trails straight).

Tighten both bolts down with the 1/2" lock nuts.

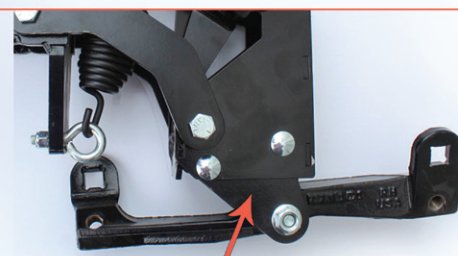


Final Assembly
shown with G2 arm

Options for mounting closing wheels to the 4-Link Closer



V Closing Bracket for angular wheels (Zipper shown)



4LC Mounting Ears for G2/G3/G4 walking beam arms (G4 shown)