

# 4 LINK CLOSER™ MOUNTING INSTRUCTIONS

## Case IH 800-1250 Series Planters

Before working on your planter or drill

**DANGER:** When storing or working on the planter always install cylinder stops or place the planter on stands to prevent personal injury or damage to the attachments.

**PLEASE:** Read instructions completely and verify all package contents before beginning installation

### SPRING EYE BOLT 3-HOLE PLACEMENT



**NOTE:** The spring eye bolt has intentionally been left loose from the factory. **Install this bolt to the OPPOSITE side of the front closing wheel on the G2/G3/G4 arm.** This will prevent the G2/G3/G4 arm bracket from hitting the eye bolt.

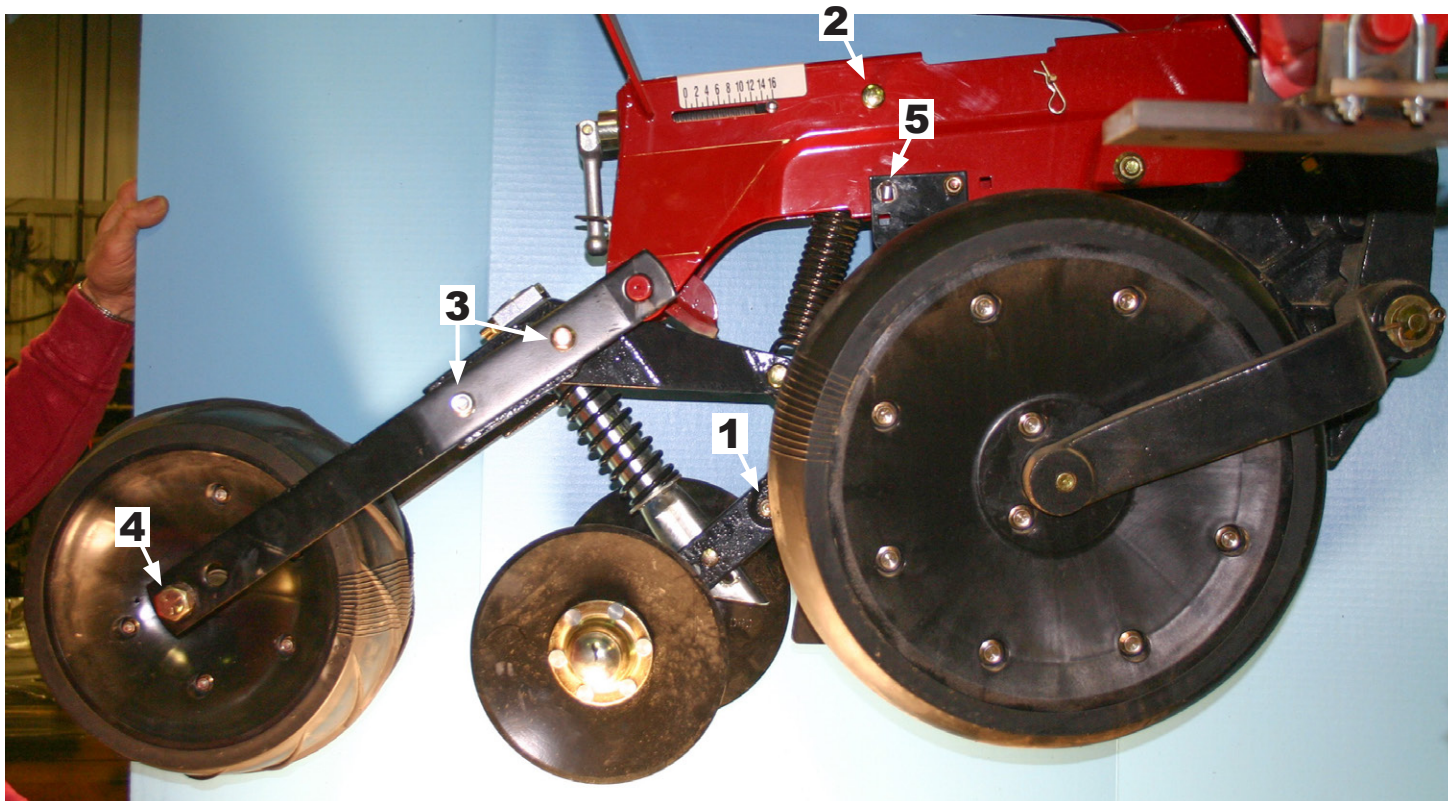


### 4 Link Closer for Case IH Package Contents (per single row)

Item	Quantity
1/2" x 1-1/2" Bolt	2
1/2" Lock Nut	2
1/2" Flat Washer	2
3/8" x 3" U-bolt	2
3/8" Nut	8
5/16" x 2-1/2" Bolt	1
5/16" Nyloc Nut	1

### REMOVING CASE IH PRESS TIRE & COVERING DISC ASSEMBLY

- Step #1:** Remove bolt that mounts covering discs assembly to rear of seed boot.
- Step #2:** Remove press tire down pressure spring and upper pin.
- Step #3:** Remove two bolts in press tire arm (one side is all that is needed).
- Step #4:** Loosen press tire through bolt. The whole assembly will now come off of unit.
- Step #5:** Remove opener disc blade scraper back bolts (on both sides).



**OVER →**

# 4 LINK CLOSER™ MOUNTING INSTRUCTIONS

## Case IH 800-1250 Series Planters

(CONTINUED)

### INSTALLING MOUNTING BRACKET TO ROW UNIT

#### Step #6:

Slide pipe mounted end up into row unit between opener disc scraper and install 5/16" x 2-1/2" bolt with 5/16" nyloc lock nut into rear scraper mounting bolt hole.

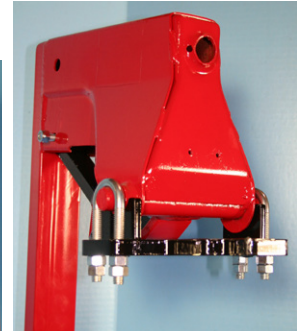
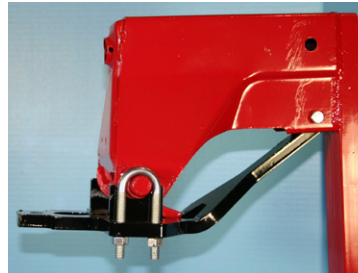


#### Step #7:

Pivot up the assembly rearward so the 'u' shaped saddles cradle old press tire mounting pin.

Install 3/8" x 3" u-bolts and tighten them down with 3/8" nuts.

Tighten the 5/16" scraper bolt.



### INSTALLING 4 LINK CLOSER TAIL SECTION

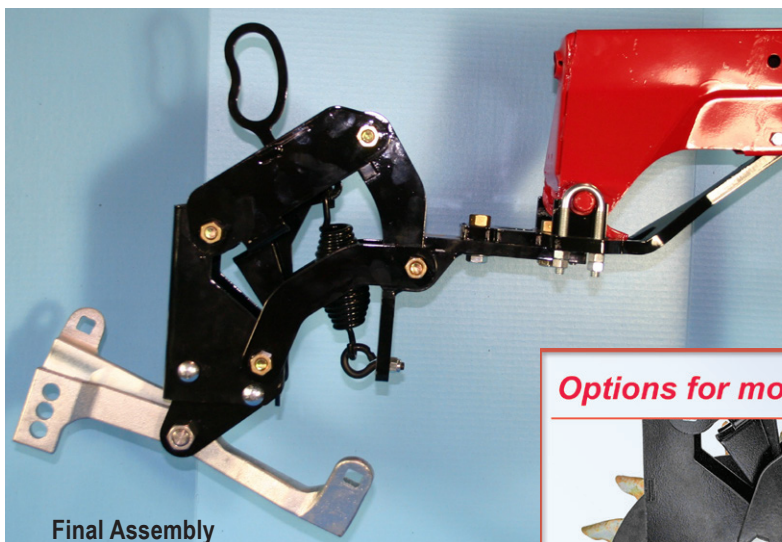
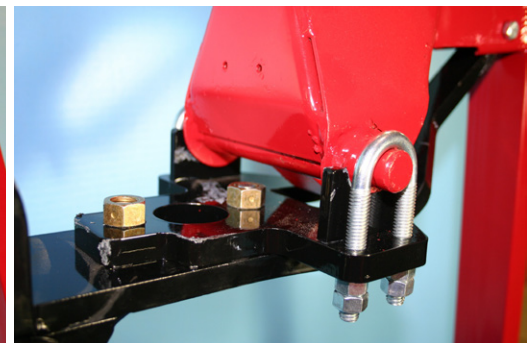
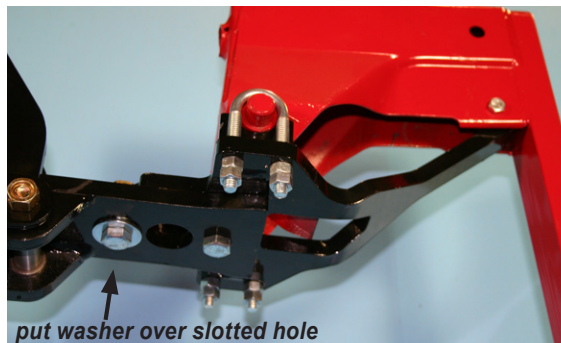
#### Step #8:

Using the 1/2" x 1-1/2" bolts, bolt the 4LC tail section under the Case IH tail section mounting bracket.

Place the 1/2" flat washer between the back bolt and tail section.

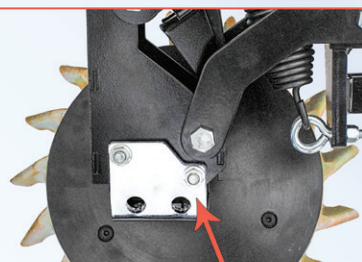
Align tail section with row unit (so it trails straight).

Tighten both bolts down with the 1/2" lock nuts.

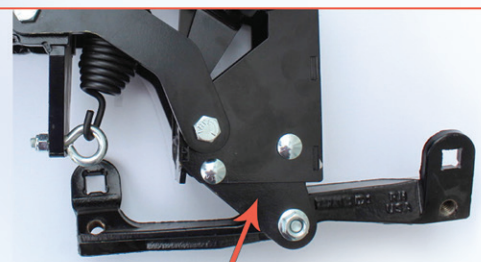


**Final Assembly**  
shown with G2 arm

#### Options for mounting closing wheels to the 4-Link Closer



V Closing Bracket for angular wheels (Zipper shown)



4LC Mounting Ears for G2/G3/G4 walking beam arms (G4 shown)