

4 LINK CLOSER™ MOUNTING INSTRUCTIONS

John Deere Planters (Late 7200-1700 Series & ExactEmerge)

Before working on your planter or drill

DANGER: When storing or working on the planter always install cylinder stops or place the planter on stands to prevent personal injury or damage to the attachments.

PLEASE: Read instructions completely and verify all package contents before beginning installation

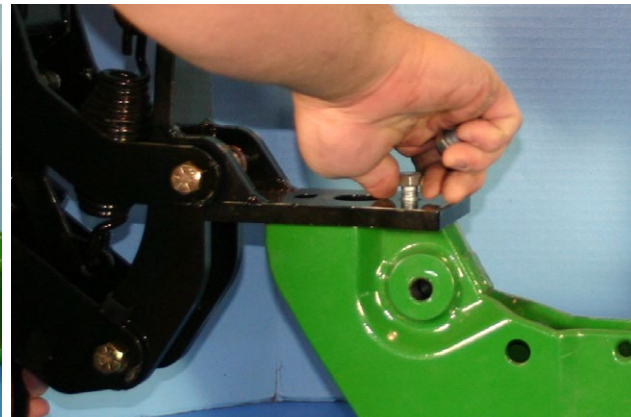


NOTE: The spring eye bolt has intentionally been left loose from the factory. **Install this bolt to the OPPOSITE side of the front G2/G3 arm.** This will prevent the G2/G3 arm bracket from hitting the eye bolt.



Step #1: Remove the John Deere press tire and tail section assembly: Loose and remove the two vertical bolts holding tail section mount and spring assembly to row unit. **SAVE BOLTS!**

Step #2: Using these bolts, install 4LC on bottom of row unit where the mount was removed. Align with row unit and tighten bolts.



NOTE: The row unit and 4LC have been flipped upside down for demonstration



Final Assembly

