

4 LINK CLOSER™ MOUNTING INSTRUCTIONS

Monosem Planters

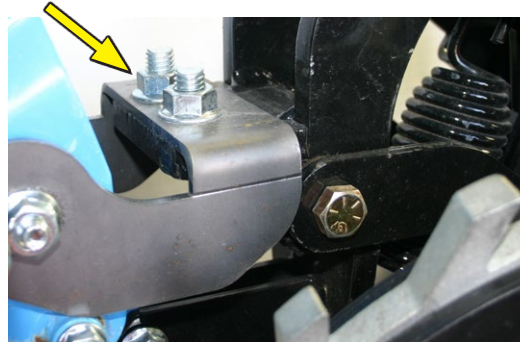
Before working on your planter or drill

DANGER: When storing or working on the planter always install cylinder stops or place the planter on stands to prevent personal injury or damage to the attachments.

PLEASE: Read instructions completely and verify all package contents before beginning installation

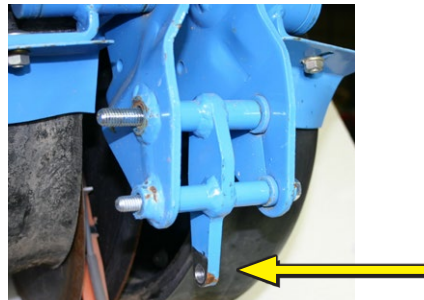
STEP #1:

Using the 1/2" x 1-1/4" carriage bolts, attach the mounting bracket to the 4 Link Closer, with the bolts inserted from the bottom. Hold in place with the 1/2" whiz nuts, but leave them loose for now.



STEP #2:

Remove the old tail section, spring, and mount bolts. Also remove the spring mounting bracket.



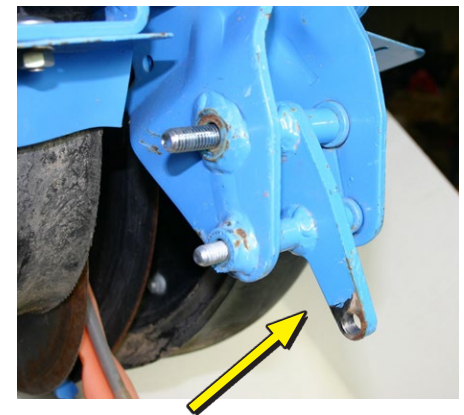
STEP #3:

Drill out hole to 7/16" on the spring mounting bracket.



STEP #4:

When re-installing the spring mounting bracket, flip it around.



STEP #5:

Install the 4 Link Closer to the rear of the Monosem unit:

Use the 7/16" x 5" bolt, 7/16" washers, and 7/16" whiz nut to bolt the 4LC to the unit at the top bolt spot on the tail section. The washers go on the outsides of the 4LC mounting bracket (between the mounting bracket and bolt, and between the mounting bracket and nut). Remember to turn the spring mounting bracket around as you re-install it here.

Use the 3/8" x 5" bolt and 3/8" whiz nut at the bottom bolt spot on the tail section.



4 Link Closer for Monosem Package Contents (per single row)	
Item	Quantity
Monosem Bracket	1
Mounting Bracket	1
1/2" x 1-1/2" Carriage Bolt	2
1/2" Whiz Nut	2
3/8" x 5" Bolt	1
3/8" Whiz Nut	1
7/16" x 5" Bolt	1
7/16" x 2" Bolt	1
7/16" Flat Washer	4
7/16" Whiz Nut	2
Instruction Sheet	1

Tools Required	
Item	Quantity
9/16" Box Wrench	2
11/16" Box Wrench	1
5/8" Box Wrench	1
3/4" Box Wrench	1
7/16" Drill Bit	1

OVER →

4 LINK CLOSER™ MOUNTING INSTRUCTIONS

Monosem Planters

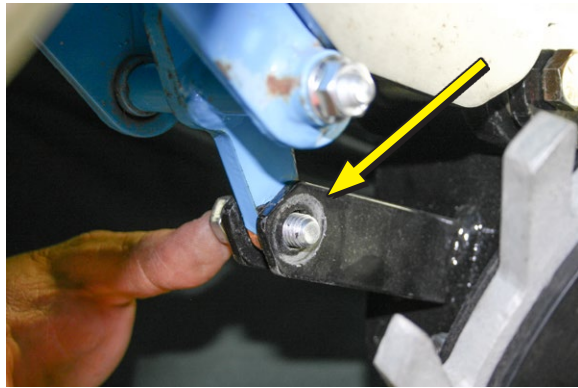
Before working on your planter or drill

DANGER: When storing or working on the planter always install cylinder stops or place the planter on stands to prevent personal injury or damage to the attachments.

PLEASE: Read instructions completely and verify all package contents before beginning installation

STEP #6:

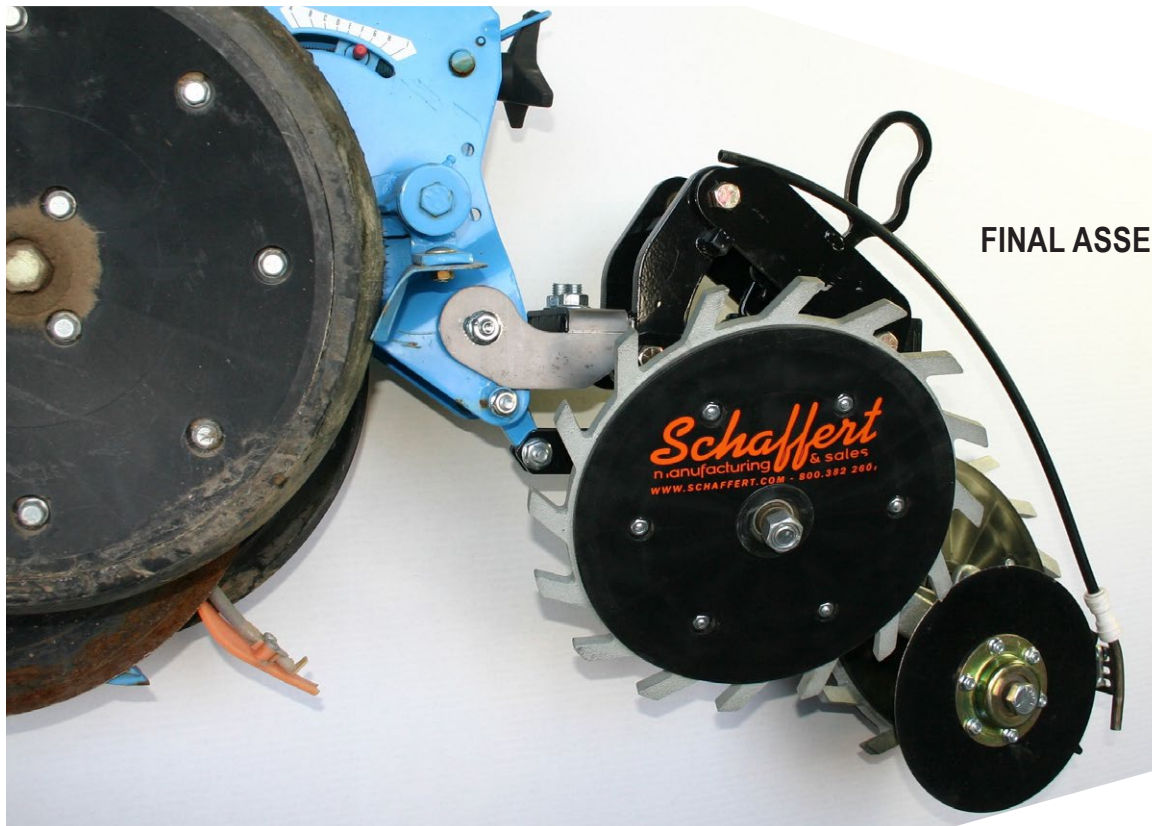
Install 7/16" x 1-1/4" bolt through the 4LC's lower mount and the drilled-out hole in the old spring mounting bracket. Secure with 7/16" whiz nut.



STEP #7:

Square up the unit and 4LC and snug all bolts. Check alignment, then finish tightening all bolts down.

NOTE: Pick up rear of 4LC to take out slack in slotted holes in brackets.



FINAL ASSEMBLY



NOTE: The spring eye bolt has intentionally been left loose from the factory. **Install this bolt to the OPPOSITE side of the front G2/G3 arm.** This will prevent the G2/G3 arm bracket from hitting the eye bolt.

