

# 4 LINK CLOSER™ MOUNTING INSTRUCTIONS

## White 8000 Planters

Before working on your planter or drill

**DANGER:** When storing or working on the planter always install cylinder stops or place the planter on stands to prevent personal injury or damage to the attachments.

**PLEASE:** Read instructions completely and verify all package contents before beginning installation

### SPRING EYE BOLT 3-HOLE PLACEMENT



**NOTE:** The spring eye bolt has intentionally been left loose from the factory. **Install this bolt to the OPPOSITE side of the front closing wheel on the G2/G3/G4 arm.** This will prevent the G2/G3/G4 arm bracket from hitting the eye bolt.



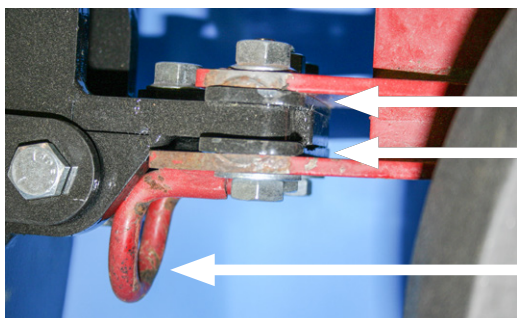
### 4 Link Closer for White 8000 Package Contents (per single row)

Item	Quantity
4 Link Closer (complete assembly) . . .	1
Mounting Plate . . . . .	2
1/2" x 2" Bolt . . . . .	4
1/2" Lock Nut . . . . .	4
1/2" Flat Washer . . . . .	4
Instruction Sheet . . . . .	1



#### Step #1:

Remove these 3 bolts in your current planter tail section.

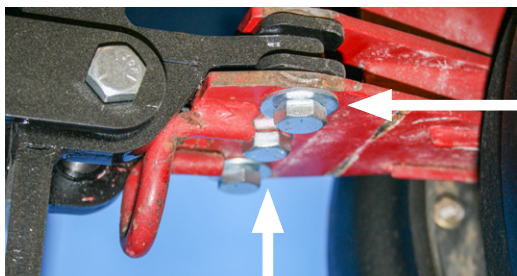


#### Step #3:

Install 4LC on to tail section with 1 plate on top and 1 plate on bottom of 4LC.

#### Step #2:

Remove spring from hoop.

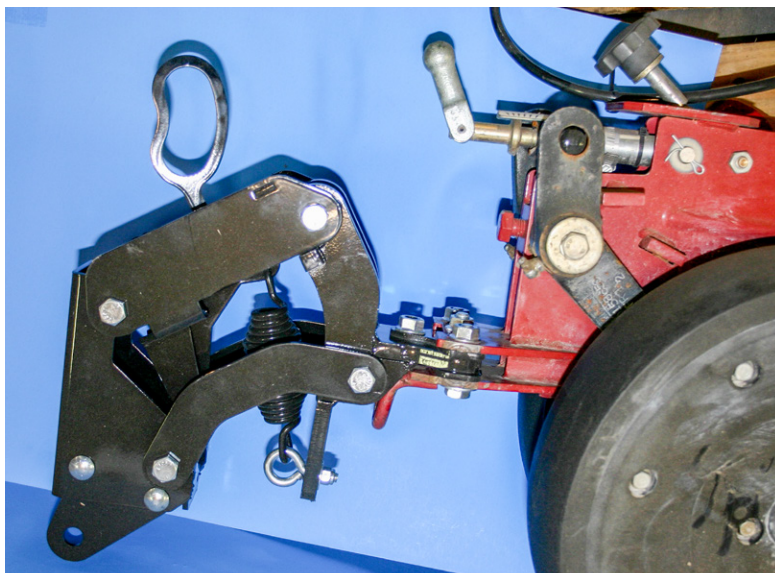


#### Step #4:

Re-install the 3 bolts into unit frame. Make sure there are washers on the bottom and top of both outside bolts.

#### Step #5:

Align 4LC with row unit. Tighten all four 1/2" bolts.



Final Assembly