

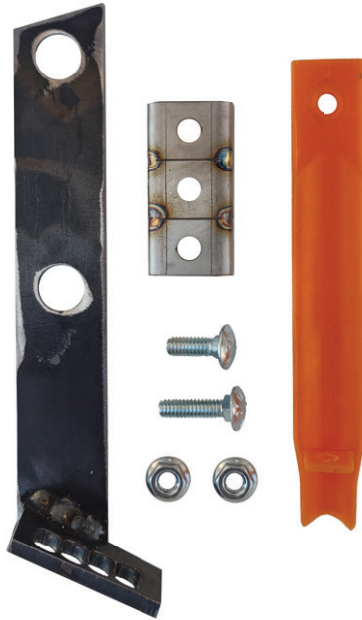
# REBOUNDER® MOUNTING INSTRUCTIONS

## Case IH Precision Disk 500 / 500T & New Holland 2080 / 2085 Air Drills

Before working on your planter or drill

**DANGER:** When storing or working on the drill always install cylinder stops or place the drill on stands to prevent personal injury or damage to the attachments.

**PLEASE:** Read instructions completely before beginning installation.



Rebounder	
Package Contents for part #: DOIH500T	
Qty	Item
1	DOJD7 Rebounder (with tab)
1	Instruction Sheet

Mounting Bracket	
Package Contents for part #: DIH500MBL DIH500MBR	
Qty	Item
1	Mounting Bracket (L or R)
1	Triple Channel Bracket
1	1/4" x 1" Carriage Bolt
1	1/4" x 3/4" Carriage Bolt
2	1/4" Whiz Nut

Before you begin, verify all "package contents" items.

*Qty is per single row.*

### PLEASE NOTE:

**MOUNTING BRACKET:** These drills take half Left and half Right mounting brackets.

The parts in this Rebounder kit are in the process of being updated:

**CHANNEL BRACKET:** Will be one extended piece with square top and bottom holes.

**Y-NOT FERTILIZER KIT:** We are customizing this kit specifically for this Rebounder.

## RUNNING FERTILIZER

**#1:** If applying liquids in furrow with the Rebounder, attach either Y-Not Split It, Hose Holder, or Straight Shot kit by following kit directions.

**INSTALL KIT BEFORE INSTALLING REBOUNDER TO PLANTER UNIT.**

SEE KIT INSTRUCTIONS.

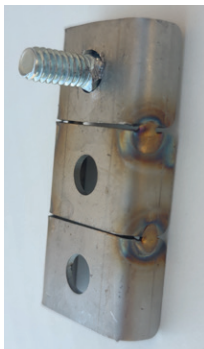
## MOUNTING CHANNEL BRACKET TO MOUNTING BRACKET

**#2:** Push the 1/4"x3/4" carriage bolt out through the top hole of the triple channel bracket.

Place the triple channel bracket onto the front side of the mounting bracket, with the 3/4" carriage bolt going into the 2nd hole from the top of the front of the mounting bracket.

(The "arm" of the mounting bracket should be directed upwards and away from the front 4-holed side.)

Secure in place with 1/4" whiz nut. Do not tighten until after Rebounder has been aligned straight.



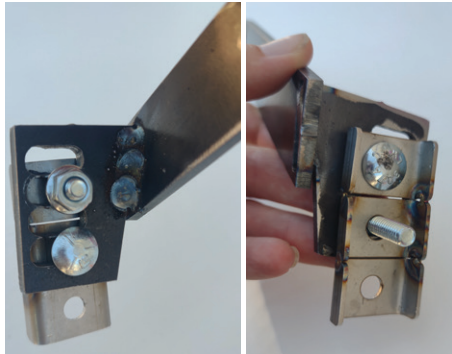
**OVER →**

# REBOUNDER® MOUNTING INSTRUCTIONS

## Case IH Precision Disk 500 / 500T & New Holland 2080 / 2085 Air Drills

### MOUNTING REBOUNDER TO BRACKETS

**#3:** From the back side of the "face" of the mounting bracket, push the 1/4"x1" carriage bolt out through the bottom hole of the mounting bracket and the middle hole of the triple channel bracket.



Place the Rebounder over the 1" carriage bolt. (The tab on the bottom of the Rebounder will face away from the mounting bracket.)

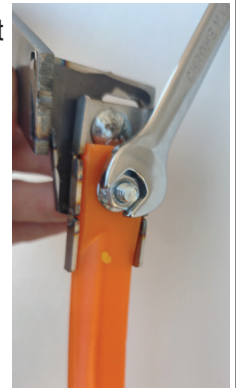
Secure in place with 1/4" whiz nut.



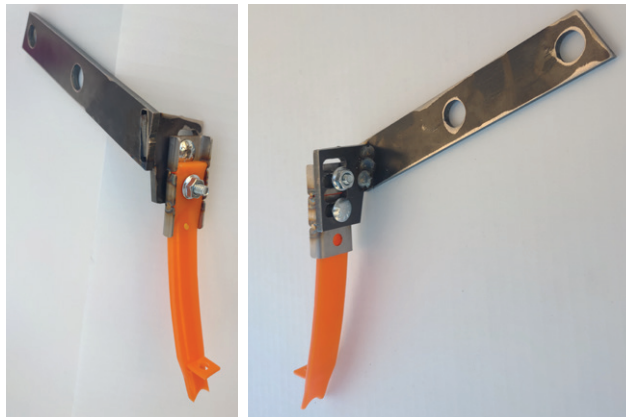
Make sure the channel bracket and Rebounder are aligned straight and parallel with the bracket's "arm" so that the Rebounder will run straight down the center of the furrow.

Tighten the whiz nut on the 3/4" bolt on the back side of the mounting bracket.

You may want to wait to tighten the whiz nut on the front side of the Rebounder until after Step #4 is complete.



*Final Assembly Steps #2 - #3*



### MOUNTING REBOUNDER & BRACKET TO SEED BOOT

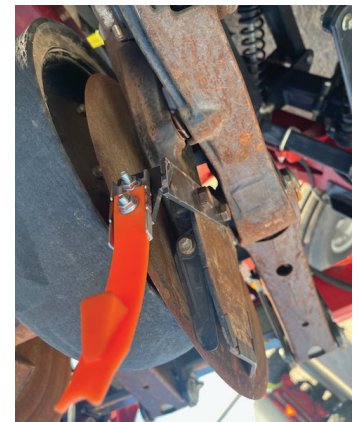
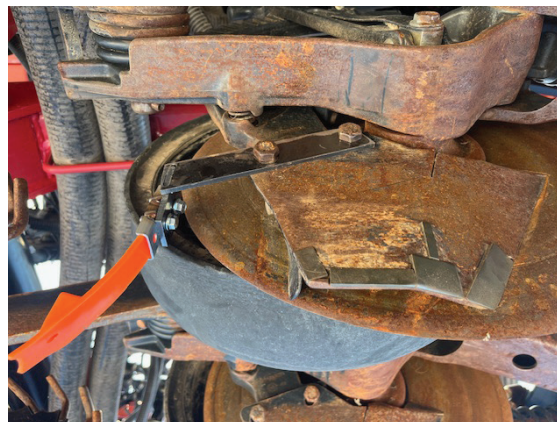
**#4:** Remove these bolts from the top of the seed boot.



Place mounting bracket under existing bolts, leaving the scraper shim under the bracket.

Replace and tighten bolts over the mounting bracket.

Center Rebounder and tighten whiz nuts.



**NOTE ON THE REBOUNDER:** Shown in these photos is the DOJD7 Rebounder with molded-in Straight-Shot attachment.