

HALF-CAM MOUNTING INSTRUCTIONS

Installing the Half-Cam Closing System on 4-Link Tail Section

Before you begin, verify all kit package contents:

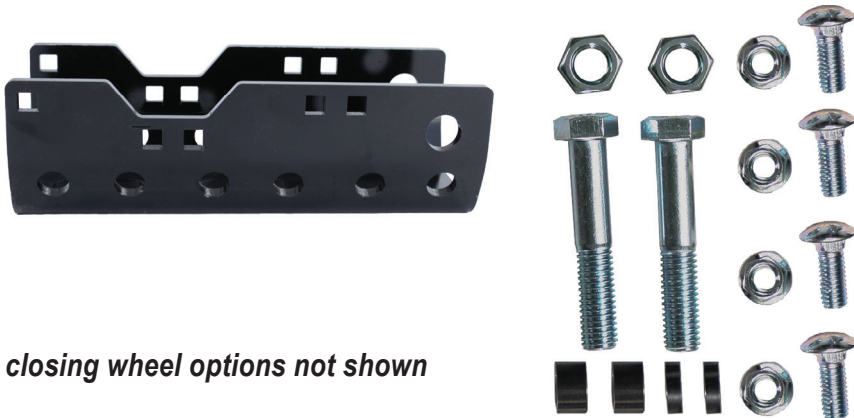


| Half-Cam Pivot Kit | |
|----------------------------------|-----------------------------|
| Package Contents : HALF-CAM | |
| Qty | Item |
| 1 | Half-Cam Bracket |
| 1 | 3/4" x 5" Bolt |
| 2 | 3/4" Washer |
| 1 | 3/4" Nylon Lock Nut |
| 2 | Black Bushing |
| Staked assembly includes: | |
| 1 | 1/2" x 8" Bolt |
| 1 | 1/2" Nylon Lock Nut |
| 2 | 1/2" Washer |
| 1 | 1/2" Spring Half-Cap Washer |
| 1 | Spring |
| 1 | Spring Bracket |
| 2 | 3/8" x 1" Hex Bolt |
| 2 | 3/8" Whiz Nut |



6" Chicken Tracker shown
optional are:
4" Chicken Tracker or
6" rubber press tire

| Half-Cam Press Wheel Kit | |
|---|--|
| Package Contents : HALFCAM-PWK | |
| Qty | Item |
| 1 | 5/8" x 10" Press Wheel Bolt |
| 1 | 5/8" Whiz Nut |
| 2 | 1" x 3" Wheel Bushing |
| Optional Press Wheel (sold separately) | |
| 1 | — 4" Chicken Tracker or — 6" Chicken Tracker or — 6" Rubber Press Tire |



closing wheel options not shown

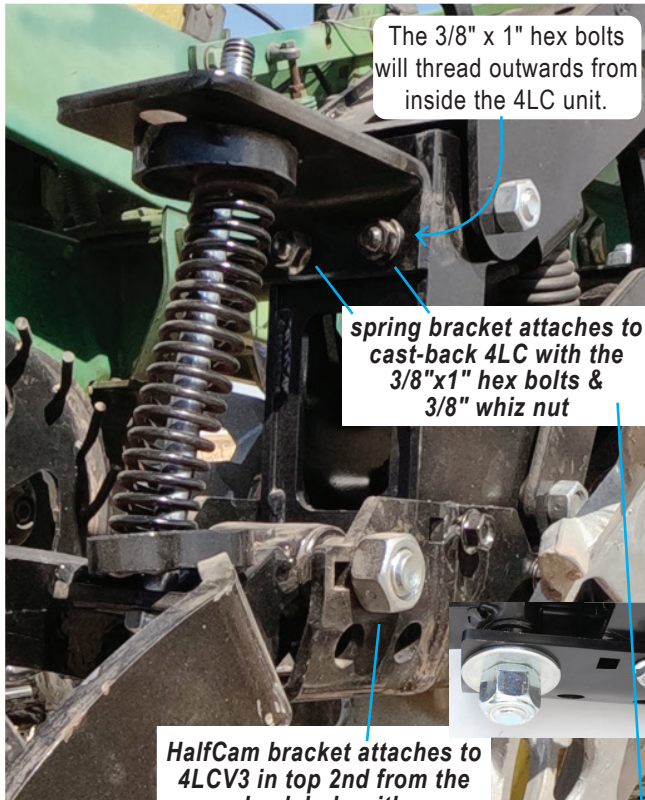
| Half-Cam V Closing Wheel Bracket Kit | |
|---|---|
| Package Contents : 4LCV3 | |
| Qty | Item |
| 1 | Extended V Closing Wheel Bracket 4LCV3 |
| 2 | 5/8" x 3-1/2" Bolt |
| 2 | 5/8" Lock Nut |
| 4 | 1/2" Spacer |
| 4 | 1/4" Spacer |
| 4 | 3/8" x 1" Hex Bolt |
| 4 | 3/8" Whiz Nut |
| Optional Closing Wheel (sold separately) | |
| 2 | — cast Mohawk Wheel or — cast Zipper Wheel or — Mohawk Max Wheel or — Zipper Max Wheel |

HALF-CAM MOUNTING INSTRUCTIONS

Installing the Half-Cam Closing System on 4-Link Tail Section

INSTALLING THE HALF-CAM PIVOT KIT

For easier installation, install the Pivot Kit before installing the Closing Wheels Kit.



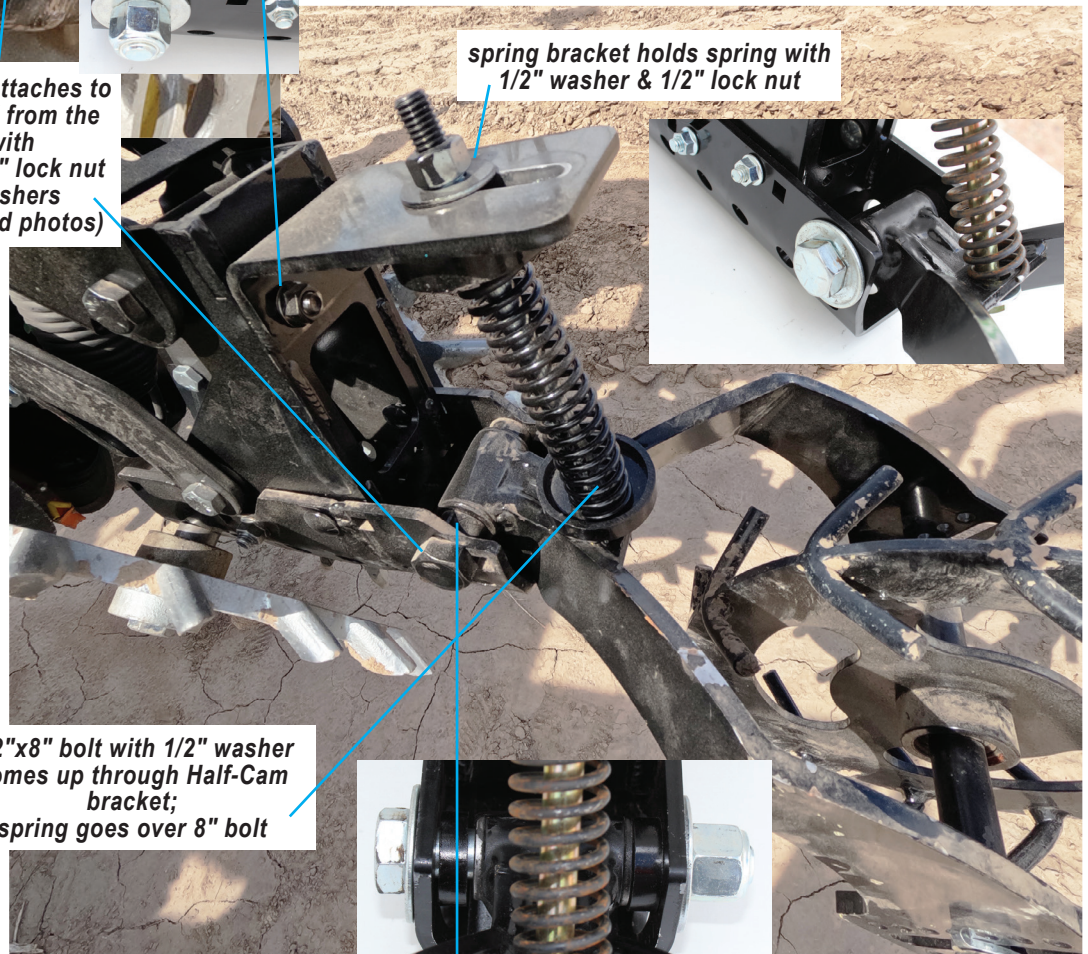
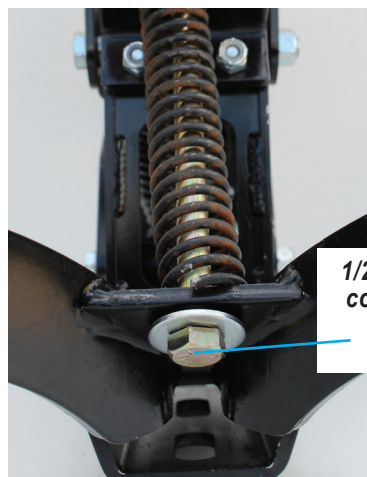
New style spring half-cap washer is smaller than shown in photos



| Half-Cam Pivot Kit | |
|---------------------------------------|-----------------------------|
| Package Contents used in this section | |
| Qty | Item |
| 1 | Half-Cam Bracket |
| 1 | 3/4" x 5" Bolt |
| 2 | 3/4" Washer |
| 1 | 3/4" Nylon Lock Nut |
| 2 | Black Bushing |
| Staked assembly includes: | |
| 1 | 1/2" x 8" Bolt |
| 1 | 1/2" Nylon Lock Nut |
| 2 | 1/2" Washer |
| 1 | 1/2" Spring Half-Cap Washer |
| 1 | Spring |
| 1 | Spring Bracket |
| 2 | 3/8" x 1" Hex Bolt |
| 2 | 3/8" Whiz Nut |

HalfCam bracket attaches to 4LCV3 in top 2nd from the back hole with 3/4"x5" bolt & 3/4" lock nut & two 3/4" washers (not shown in field photos)

spring bracket holds spring with 1/2" washer & 1/2" lock nut



3/4"x5" Bolt → 3/4" Washer → 4LCV3 → Black Bushing → HalfCam → Black Bushing → 4LCV3 → 3/4" Washer → 3/4" Lock Nut

HALF-CAM MOUNTING INSTRUCTIONS

Installing the Half-Cam Closing System on 4-Link Tail Section

INSTALLING THE V BRACKET & CLOSING WHEELS

STEP #1:

Line the 4LCV3 extended V closing wheel bracket up over the bottom of the 4-Link Closer. Secure in place with the four 3/8" x1" hex bolts.

For easiest installation, have the bolt head on the inside of the 4LC, and thread the four 3/8" whiz nuts on from the outside.



underneath the 4LC & extended V bracket



final assembly

| Half-Cam V Closing Wheel Bracket Kit | |
|--|---|
| Package Contents used in this section | |
| Qty | Item |
| 1 | Extended V Closing Wheel Bracket 4LCV3 |
| 2 | 5/8" x 3-1/2" Bolt |
| 2 | 5/8" Lock Nut |
| 4 | 1/2" Spacer |
| 4 | 1/4" Spacer |
| 4 | 3/8" x 1" Hex Bolt |
| 4 | 3/8" Whiz Nut |
| Optional Closing Wheel (sold separately) | |
| 2 | — cast Mohawk Wheel or — cast Zipper Wheel or — Mohawk Max Wheel or — Zipper Max Wheel |

STEP #2:

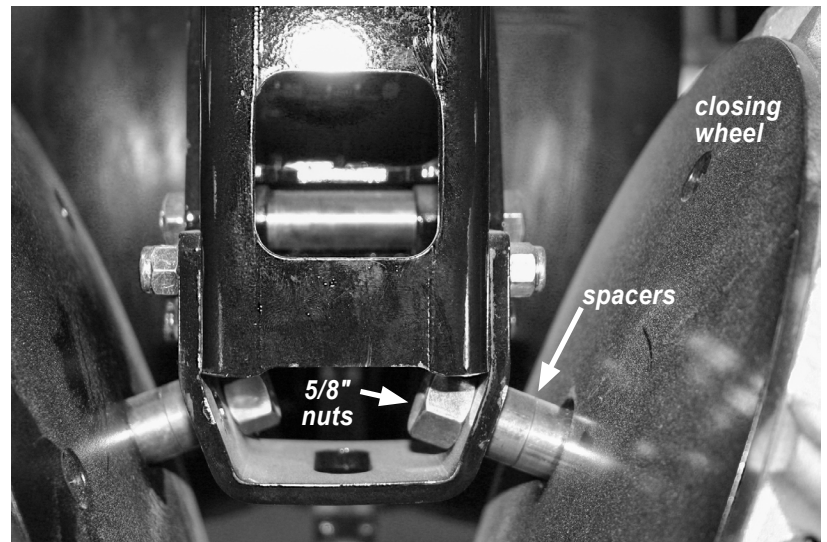
Using the two 5/8" x 3-1/2" wheel bolts and 5/8" lock nuts, mount your closing wheels to the bottom of the 4LCV3 mounting bracket.

The wheels can be offset by placing one in the front hole and the other in the second from the front hole.

Have the bolt head on the outside of the wheel, and thread the nut on the inside of the mounting bracket.

Use 1/4" and 1/2" spacers on the inside of each wheel as needed.

See **MOHAWK/ZIPPER TROUBLESHOOTING : SETTING THE WHEEL DISTANCE** for more information on how far apart the closing wheels should be spaced. Make sure you refer to the proper instructions for your type of wheels.



closing wheel

spacers

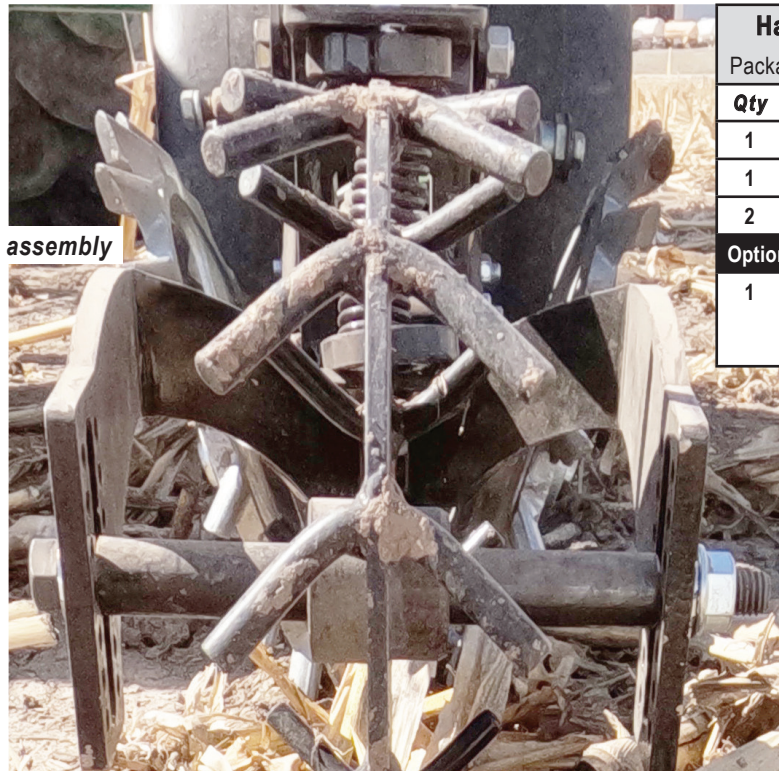
5/8" nuts

See Mohawk/Zipper Troubleshooting : Setting Your Wheel Distance

HALF-CAM MOUNTING INSTRUCTIONS

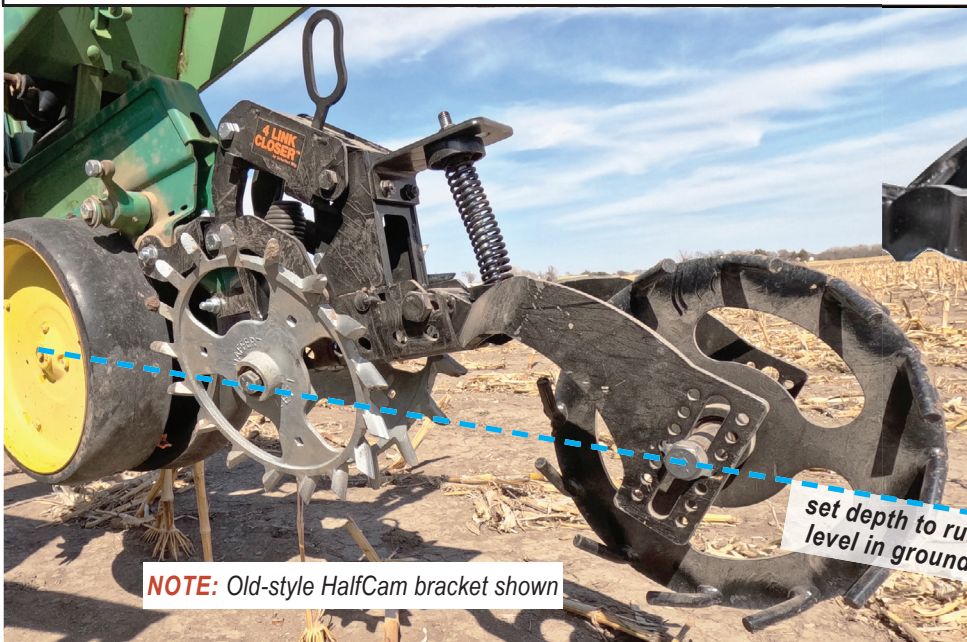
Installing the Half-Cam Closing System on 4-Link Tail Section

INSTALLING THE PRESS WHEEL KIT



| Half-Cam Press Wheel Kit | |
|--|--|
| Package Contents used in this section | |
| Qty | Item |
| 1 | 5/8" x 10" Press Wheel Bolt |
| 1 | 5/8" Whiz Nut |
| 2 | 1" x 3" Wheel Bushing |
| Optional Press Wheel (sold separately) | |
| 1 | — 4" Chicken Tracker or — 6" Chicken Tracker or — 6" Rubber Press Tire |

10" Bolt → [HalfCam — 3" Bushing — Press Wheel — 3" Bushing — HalfCam — Nut]



Good beginning depth settings:
Middle back hole

The back of the HalfCam bracket offers multiple holes of adjustment. Set the depth of the wheel so that it runs level in the ground.

To install the Chicken Tracker

wheel, insert the long bolt through the desired adjustment hole from the outside of one side of the HalfCam. In the middle of the two HalfCam sides, thread a 3" bushing on

the long bolt, then Chicken Tracker wheel, then the other 3" bushing. Push the long bolt through the corresponding adjustment hole on the other side of the HalfCam bracket.

Secure in place with whiz nut.

Make sure the tines on your Chicken Tracker wheel are pointed the proper way. They should be pointed down in the back.