

WHEEL SCRAPER MOUNTING INSTRUCTIONS

Wearparts & Coyote Machined Gauge Arms

Before working on your planter or drill

DANGER: When storing or working on the planter always install cylinder stops or place the planter on stands to prevent personal injury or damage to the attachments.

PLEASE: Read instructions completely and verify all package contents before beginning installation

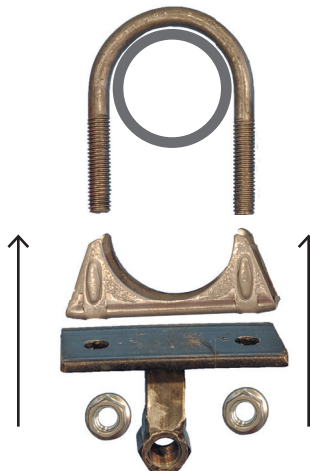
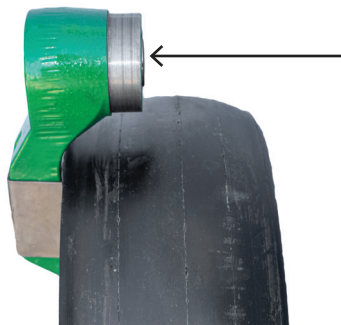


Bolt-On Gauge Wheel Scraper for Machined Gauge Arms Package Contents (per single row)	
Item	Quantity
Mounting Bracket with Welded-On Nut	1
1/2" Fine Thread Bolt	1
Scraper T-Bracket	1
Plastic Scraper	1
1/4" x 3/4" Carriage Bolt	2
1/4" Whiz Nut	2
Instruction Sheet	1

U-Bolt for Machined Gauge Arms Package Contents (per single row)	
Item	Quantity
3/8" x 1-7/8" U-Bolt	1
U-Bolt Mounting Clamp	1
3/8" Whiz Nut	2

STEP #1:

The machined gauge arms have a machined area on outside bearing housing of the arm.



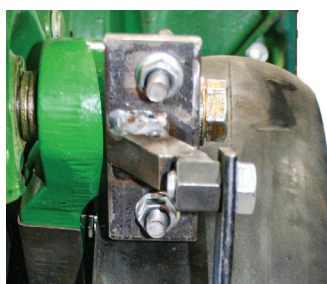
We weld our gauge wheel scraper mount to the bracket holding the u-bolt that clamps to the milled area of the arm.

Put the u-bolt around this milled area.

Then slide the u-bolt mounting clamp and mounting bracket with the welded-on nut over the ends of the u-bolt.

The weld-on piece with nut should be pointing away from the tail section, toward the center of the gauge wheel.

Hold in place with the whiz nuts included in u-bolt clamp kit. Slightly tighten both nuts onto the u-bolt.



STEP #2:

Loosely assemble the plastic scraper to the face of the scraper t-bracket using the two 1/4" carriage bolts (scraper side) and 1/4" whiz nuts (bracket side).

The plastic scraper will be mounted to the gauge wheel so that the contour of the scraper fits the contour of the tire.



OVER →

WHEEL SCRAPER MOUNTING INSTRUCTIONS

Wearparts & Coyote Machined Gauge Arms



STEP #3:

Bolt t-bracket with scraper to the mounting bracket with welded-on nut using the 1/2" fine thread bolt.

Mount the t-bracket and bolt head on the side of the mounting bracket that is away from the planter and over the center of the tire.



STEP #4:

Center the plastic scraper on the t-bracket over the gauge wheel tire so that the contour of the scraper fits the contour of the tire. Lightly tighten the nuts.



NOTE:

The gauge wheel scraper can be rotated up and down on the arm so that you can change it's position up and down over the tire.

